

Wakefield
**Safeguarding Children
Partnership**

'WHAT'S ON' TRAINING GUIDE
JULY 2026

**BOOK YOUR MULTI-AGENCY
TRAINING TODAY**

FIND OUR WHAT'S AVAILABLE...

CONTENTS

Child Exploitation Learning Exchanges

Multi-agency Neglect Training

OCTOBER DATE ADDED: Working Together a Shared Responsibility

Engaging with Men Training

Supporting & Safeguarding LGBTQIA+ Young People

Every Sleep A Safer Sleep Training

Relationship Matters: Reducing Parental Conflict Toolkit Training

Parental Mental Ill Health - Impact of Parental Mental Illness on Children

Perinatal Mental Health Multi-Agency Training

Ready to Relate / Infant Parents Relationship Cards Training Sessions

Risk and Resilience Framework Training

Partner / External Training



WSCP Our Cancellation Policy: Why It Matters

To ensure our training places are used effectively and fairly, we operate a cancellation policy introduced in November 2024. Many of our courses are oversubscribed, and in the past we experienced a high number of non-attendees. This meant that free training places were left unused while other practitioners, who were eager to attend, missed out. Since introducing the policy, non-attendance has reduced, helping us offer high-quality learning opportunities to more colleagues. However, we still occasionally need to apply charges when places are not cancelled in advance.

If you can no longer attend a course you have booked onto, please cancel your place as soon as possible. This ensures your space can be offered to someone else.

To cancel your place, simply log back into the WSCP website and go to your dashboard. It's the same place you used to book your training, so it's quick and easy to do.

If you need to cancel on the day of the training, please email wscpevents@wakefield.gov.uk as a matter of urgency. Thank you for helping us keep training accessible for everyone.

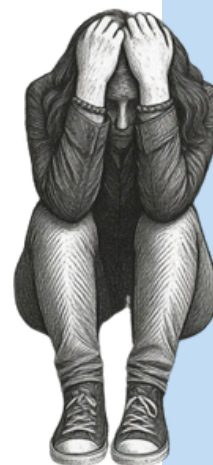
Learning Exchange offer

WSCP are now in their third year of running 'Child Exploitation' focussed learning exchanges. All sessions are designed & developed for practitioners who work or volunteer with children and their families.

**Speak up. Stand up.
Stop Exploitation**

What have we covered so far?

- Modern Slavery & Child Trafficking
- Serious Youth Violence *
- Information to Intelligence *
- National Referral Mechanism (NRM) *
- **Financially Motivated Sexual Extortion**
- Disrupting Exploitation *
- Drug Awareness *
- **Tackling Child Exploitation Partnership Conference**



*Recordings available online



Coming in 2026

- Risk Outside The Home Model
- Cuckooing & Transitions
- Online Exploitation (TBC)
- Raising Awareness in our Community

Speak Up. Stand Up. Stop Exploitation!

During 2026, WSCP will be offering more learning exchanges to help develop and widen the response to tackle Child Exploitation here in Wakefield and the surrounding area.



Stay Connected...

To keep abreast of all the latest training offers please sign up to the e-bulletin or bookmark the training page on the WSCP website

<https://www.wakefieldscp.org.uk/training/>

Practitioners can now access a suite of resources on the Knowledge Hub which are regularly updated by the business unit. This resource has been developed by the experts within the partnership to ensure that all CE work is accessible, up to date and available online.

Scan the QR code to find out more about CE, CSE, Missing from Home, Extra Familial Harm, Financial exploitation and much more...



**WORKING TOGETHER TO PREVENT, IDENTIFY,
DISRUPT & STOP CHILD EXPLOITATION**

TRAINING

Neglect:

A shared responsibility



Neglect is the primary driver of statutory safeguarding intervention! AND is the most common form of child abuse... 54% of professionals across health, police, social care and education reported increases in neglect cases, with 90% linking this rise to cost-of-living pressures and poverty.

Why do i need to attend the Neglect Multi-Agency Training?

- Strengthens your ability to identify early indicators of harm
- Supports better multi-agency information sharing and decision-making
- Helps address the growing complexity of family needs linked to poverty and wider stressors
- Ensures practitioners are equipped to intervene early and prevent escalation to serious harm

BOOK NOW!



Neglect:

A shared responsibility

A toolkit to expand and support understanding of child neglect

2026 Dates : 12th May / 23rd Sept / 19th Nov

What will I learn?

The session will explore how we identify neglect, what to consider, tools to use and how best to respond to Neglect through robust assessment information sharing.

Topics covered include neglect and SEND, brain development in the neglected child, professional curiosity & challenge, unconscious bias, This training encourages collaboration, professional curiosity, challenge and discussion.

***Please note: This is NOT Neglect Toolkit training.**

Before attending this training, it may be useful to watch the new and updated recorded training:

'How to' guide for the WSCP Neglect Toolkit.

Neglect Toolkit training video



WORKING TOGETHER TO SAFEGUARD CHILDREN

A SHARED RESPONSIBILITY

Why book onto Working Together to Safeguard Children multi-agency training?

This training strengthens practitioners' shared understanding of safeguarding, supporting early identification of concerns, confident information-sharing and effective partnership working.

The 2026 Working Together guidance introduces important updates, including stronger expectations around inclusive, anti-discriminatory practice, clearer multi-agency accountability, improved Family Help arrangements, and enhanced focus on harms such as exploitation, domestic abuse and online risks.

Attending ensures practitioners stay current, aligned with national expectations, and equipped to deliver consistent, child-centred support.

BOOK NOW!



Engaging with Men Training

Why should I attend?

Men's experiences, motivations and help-seeking behaviours often differ from those of women, yet traditional practice approaches don't always reflect these differences. This training gives practitioners the insight and confidence to work more effectively with men in safeguarding, support and early help contexts. By attending, practitioners will:

- **Strengthen engagement skills.** Learn practical strategies for building rapport with men who may be reluctant to engage, mistrust services, or present with resistance or avoidance.
 - **Understand gendered experiences and barriers.** Explore how societal expectations, identity, trauma, mental health, and fatherhood influence men's behaviour, communication and willingness to accept support.
 - **Improve outcomes for children and families.** Gain tools to involve fathers and father-figures more positively in assessments, planning and intervention, leading to safer, more stable outcomes for children.
 - **Challenge stereotypes and unconscious bias.** Reflect on assumptions that can unintentionally minimise men's roles, overlook risks, or miss valuable strengths and protective factors.
 - **Build confidence in complex work.** From non-resident fathers to male perpetrators or victims of abuse, practitioners will leave with clearer frameworks, better questions to ask, and evidence-informed approaches to practice.
- This session is essential for anyone working in early help, social care, health, education, policing, community services or multi-agency safeguarding teams who wants to develop more inclusive, effective and relational practice with men.**



Hear Directly From Experts and Lived Experience

Come and experience first-hand what it feels like for fathers who struggle within the system, and gain new understanding that will shape more empathetic, inclusive and effective practice.



Featuring contributions from:

Book
YOUR PLACE



July, *August
& Sept
(*new date)

- **Dads Matter** – offering insight into the challenges fathers face and what effective, father-inclusive practice looks like.
- **The Family Nurse Partnership** – sharing practical tools on Motivational Interviewing to support more meaningful and authentic engagement.
- **The PAIR Team** – bringing specialist perspectives on working with men in safeguarding and relational practice contexts.
- **Rosalie Ryrie Foundation** – presenting powerful live case studies, including a Q&A with a parent who will share, in his own words, what it has been like to navigate professional systems as a dad, highlighting both barriers and opportunities for change.



Family Nurse
Partnership





SUPPORTING AND SAFEGUARDING LGBTQIA+ YOUNG PEOPLE

“More confident to challenge and use pronouns on a more general basis”

“Greater awareness of unique challenges facing LGBT students”

“Format was amazingly accessible, vibrant and inclusive”

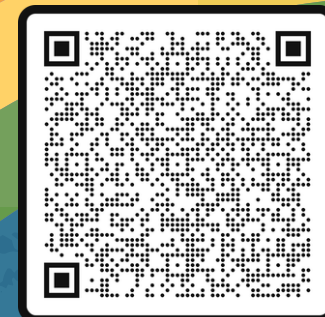
What will I learn?

- Gain an understanding of key terminology around **identity and pronouns**
- Insight into the **challenges/ risk factors** faced by LGBTQIA+ young people in Wakefield
- Insight into the **sociohistorical context and impact of the media**
- Interpret current government guidance and **best practice**
- The ability to **reflect** on scenarios and consider the best ways you can support young people
- **Signposting** young people to appropriate support

YOUR HOST

Steph Millar-Pollock

Book Now



Every Sleep a Safer Sleep

One-Hour Multi-Agency Safer Sleep Awareness Training

Unsafe sleep remains one of the leading causes of infant death. In England and Wales, around 300 babies die suddenly and unexpectedly each year, with West Yorkshire experiencing some of the highest rates.

This bespoke training has been developed in response and designed for all practitioners who work with babies, infants or families providing clear, practical guidance so that everyone across the workforce can confidently recognise unsafe sleep situations, offer sound advice, and take appropriate action.

*Access the training online



What the session covers

- **Understanding Sudden Unexpected Death in Infancy (SUDI)** Key risks, terminology, and national/regional/local data.
- **Your Responsibilities** Statutory guidance and what practitioners across sectors must know.
- **Safer Sleep Principles** Evidence-based advice applicable across Early Years, health, social care, police, VCSE, safeguarding and community settings.
- **Spotting Unsafe Situations** How to identify concerns early and respond effectively.
- **Real-World Scenarios** Case examples designed to strengthen professional curiosity and embed consistent practice.



Every Sleep a Safer Sleep

Why this training matters

Wakefield saw a rise in unsafe-sleep-related infant deaths, prompting a district-wide commitment to improve safer sleep knowledge across all agencies. **Since the new training programme and safer sleep standards were introduced, Wakefield has experienced no sudden infant deaths linked to unsafe sleep** – a powerful indicator of the programme's impact.

This session is ideal for anyone working with babies or families, including:

- Early Years practitioners and childminders
- Health visitors, midwives, maternity support staff
- Social care, Early Help and safeguarding practitioners
- Police, probation and emergency responders
- Family hubs, VCSE staff, community organisations
- Anyone undertaking home visits or working closely with new parents

Why Attend

Understand SUDI and the latest safer sleep evidence

- ✓ Apply safe sleep principles confidently in your role
- ✓ Recognise unsafe situations early
- ✓ Have supportive, well-informed conversations with families
- ✓ Strengthen consistent multi-agency messaging
- ✓ Contribute to reducing preventable infant deaths in Wakefield

**BEST
START
IN LIFE**



wakefieldcouncil
working for you



Relationship Matters: Reducing Parental Conflict Toolkit Training



Relationships affect everyone; they are part of being human and are one of the hardest to navigate around as both a child and an adult.

This course is designed to increase the participants knowledge and understanding of what parental conflict is, how to recognise it as well as encouraging participants to develop a range of practical strategies in supporting families to address conflict with the help of Wakefield's relationship toolkit.

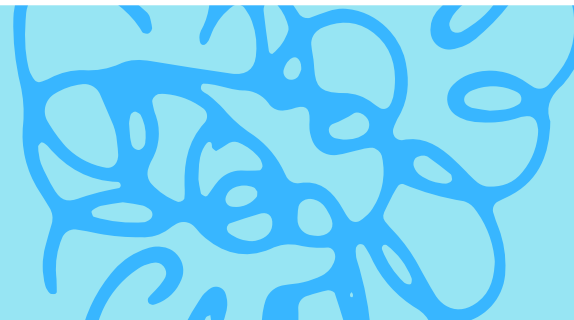
[Access the training online](#)



The training is relevant in exploring all kinds of relationships, for example, heterosexual couples, same sex couples, families with adopted children and blended families including differences in cultures or religions.

The toolkit is designed to increase practitioners' confidence in their ability to have difficult conversations with couples about their relationship by empowering them to seek and explore their own behavioural patterns and share knowledge to give families the tools they need to make their relationships healthier.

Opportunities to explore the importance of seeing children as an 'active collaborator' who can valuably add to decisions around the support that is being created around them. There is practical advice and discussions around how to 'nominate' families so they can engage in appropriate interventions to help them positively manage their relationships.



Other Partner Training offers...



South West Yorkshire Partnership
NHS Foundation Trust

Parental Mental Ill Health - Impact of Parental Mental Illness on Children

A virtual package that considers the impact of a variety of parental mental illness on children at various ages and stages of development.

Course Highlights:

- Explores the impact of mental health problems on parenting capacity to respond to the developmental needs of children
- Provides an understanding of how symptoms and medication might impact on parenting capacity
- To understand the process of assessing risk to children
- To improve multiagency collaboration, assessment and interventions to support parents and their children

This course is aimed at any member of staff (with limited or no knowledge of parental mental health) who works in the area and has contact with children or carers of children. Please note this training is not useful for midwives/0-19 practitioners or safeguarding leads.

**BOOK
NOW**



Harrogate and District
NHS Foundation Trust

Perinatal Mental Multi-Agency Training

This 2 hour session delivered by the Perinatal Mental Health Team practitioners, specialist PNMH midwife and Perinatal and Infant MH Specialist Health visitor.

Course Highlights:

- The symptoms, risks and therapies of perinatal mental illness
- The impact on mothers, babies and families
- How to respond in psychiatric emergencies and signposting to local services

This is a multi-agency training session, and would be suitable for any staff who work or volunteer with children in Health, Social Care, Education, Maternity, Family Hubs, and the Voluntary sector.

**BOOK
NOW**



Other Partner Training offers...

Future in Mind workforce development training (CAMHS)

Take a look at the many sessions held by Wakefield CAMHS which are will be hosted on Microsoft Teams, at the Wellbeing & Learning Centre in Fieldhead Hospital or at White Rose House. Scan the barcode for Spring / Summer offers



Ready to Relate / Infant Parents Relationship Cards Training Sessions

The Ready to Relate cards, developed by Bradford District Community NHS Trust, are a visual, interactive tool to help all practitioners assess, discuss and share healthcare information with families and to make National Institute for Health and Care Excellence (NICE) recommended interventions accessible. The cards aim to improve and enhance the parent-infant relationship and promote infant attachment and optimal infant development.



Parent & Infant Relationship (PAIR) team Baby Minds Monthly training

free, drop-in learning sessions. These will focus on key areas of importance, impact, and interest when assessing the Parent infant relationship to help consider babies mental health and the Voice of the child. These will also be a regular chance to drop-in and find out more about PAIR team.



Other Partner Training offers...



Risk and Resilience Framework Training

The aim of the training session is to:

- Increase confidence in navigating the Risk and Resilience website
- Explore the support tools, interventions and resources on the website
- Understand how it can support your work
- Share best practice

**BOOK
NOW**



Open to anyone who is working with children and young people (and their families) within the Wakefield District. This multi-agency training session is 2 hours and free of charge. The training is delivered by Wakefield Public Health and colleagues from across the Wakefield District.

Non-fatal Strangulation Webinar

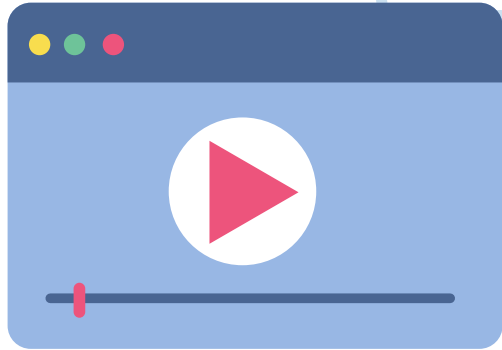
Why should you attend?

- It is present in around 25% of domestic homicides
- 1 in 4 women accessing domestic abuse services report being strangled or suffocated
- Only around 50% of victims show visible injuries, meaning signs can easily be overlooked
- Victims who experience NFS are at significantly higher risk of future serious harm or death
- Children are impacted too, with over a third of cases involving children in the household

Book now at <https://safelives.org.uk/nfs-webinar-registration-may-june-july-2026/>



If you would like to advertise your multi-agency training here please get in touch with wscpevents@wakefield.gov.uk



Recorded Training, Masterclasses and Guides



We know that sometimes you are unable to attend training, so we have put together a suite of resources from recorded training, podcasts, soundbites, presentations, guides, videos and briefings for practitioners to access in their own time. These can be used as CPD, to upskill or to raise your awareness and cover a breadth of safeguarding issues. Why not take a look ...

Substance Misuse

SEND
LGBTQIA+

Online Safety

Trauma

Professional Curiosity & Challenge

Radicalisation & Prevent

Masterclasses

Self Harm & Suicide Ideation

Young Babies & Infants

Child Exploitation

Domestic Abuse: Honor Based Abuse, Forced Marriage & FGM

Emotional Wellbeing

Neglect





WSCP Knowledge Hub



The Hub has been created for anyone who works or volunteers with children and their families in the Wakefield area, to help you easily access all the latest information on a variety of safeguarding issues in one place.

We have a selection of toolkits and larger resources where you can access information on the:

- Neglect Toolkit
- Child Exploitation suite of resources
- WSCP Practitioner Essentials
- SEND Toolkit



OR... bitesized resources for when you are in a rush?

- Understanding Sexual Behaviour,
 - Water Safety
 - Transitional Safeguarding
 - Safeguarding in Sport
 - Building Trusting Relationships
 - Motivational Interviewing
- and much more...!



Why not also give our One Minute Guides a try...

www.wakefieldscp.org.uk/professionals/one-minute-guides/