

Wakefield Safeguarding Children Partnership



Local Multi-Agency Safeguarding Partnership Arrangements June 2019

Contents

1. Introduction	P3
2. Vision and Values	P4
3. Legislation and Context	P5
4. Leadership Safeguarding Partnership Executive Multi-Agency Safeguarding Children forum	P6
5. Transparency and Scrutiny Independent Scrutiny Peer Review	P8
6. A Responsive Partnership Children and Young People Shaping the Future of our Services Learning from our Practitioners	P9
7. Learning from Good Practice and Reviews Child Safeguarding Practice Group	P10
8. Child Death Overview Panel	P10
9. A Well Informed Multi-Agency Workforce Learning and Development Group	P11
10. Understanding our Strengths and Areas for Development Safeguarding Effectiveness Group	P12
11. Identifying our Vulnerable Children and Emerging Threats Vulnerable and Exploited Group	P13
12. Partnership, Regional and National Links	P13
13. Arrangements Funding WSCP Staff Annual Report Thresholds Document	P14
14. Disputes and Escalation	P15
Appendix 1- Wakefield Safeguarding Children Partnership Structure -	P16
Appendix 2- Wakefield Safeguarding Children Partnership Summary –	P17
Appendix 3- Relevant Partners –	P18

Introduction

Welcome to the **Wakefield Safeguarding Children Partnership** multi-agency safeguarding arrangements.

The **Wakefield Safeguarding Children Partnership (WSCP)** has been developed in response to the Children and Social Work Act 2017 and Working Together to Safeguard Children 2018. The WSCP provides the framework for the safeguarding arrangements under which the safeguarding partners and relevant agencies work together to identify and respond to the needs of children, commission and publish local child safeguarding practice reviews and provide scrutiny to ensure the effectiveness of the arrangements.

The new safeguarding arrangements have been designed to build on the strengths of the previous arrangements under the Wakefield District Safeguarding Children Board, which they are replacing. Our learning and improvement framework, which fostered a culture of continuous learning and improvement across the partnership, has been retained with some minor improvements. A robust local child safeguarding practice review process, effective multi-agency audits and analysis of performance data and a comprehensive multi-agency training programme continue to be a core part of the arrangements. In response to some of the criticisms of Local Safeguarding Children Boards highlighted in the Wood Review, our governance structure has been streamlined to enable a clear line of sight to front line practice for senior leaders and facilitate an ability to understand the effectiveness of arrangements in the District to safeguard and promote the welfare of vulnerable children.

The involvement of relevant partners has been fundamental to the effective safeguarding of children in Wakefield and our new structure enables continued meaningful engagement through membership of groups and a multi-agency meeting forum. The commitment of our partners is highly valued and the success of the new arrangements relies on the continuation of these positive relationships.

The Wakefield Safeguarding Children Partnership will supersede the current arrangements in September 2019. An implementation period will lead to the partnership being fully operational by September 2019. In the event of a local child safeguarding practice review being incomplete at the point of the new arrangements taking effect, the Wakefield Safeguarding Children Board will continue for a maximum period of 12 months solely for the purpose of completing activities in relation to the review.

1. Vision and Values

Our vision in Wakefield is:

Children and young people in the Wakefield district will be safe and will feel safe within their homes, schools and communities.

We know that fundamental to achieving our vision is a framework which facilitates engagement with all partners, a transparent and reflective approach to safeguarding, services which are informed by the views and experiences of children and practitioners, continuous learning from practice and focussed training and knowing our strengths and areas that require development.

To achieve our vision the WSCP will:

- Enable work across the partnership to improve safeguarding practice
- Monitor, and where necessary challenge, the performance of agencies in relation to safeguarding through our Safeguarding Effectiveness Group
- Develop and disseminate up to date and effective policies, guidance and procedures, and challenge partner agencies on the implementation through our Safeguarding Effectiveness Group
- Implement learning from good practice and also from when things go wrong to enable us to influence the delivery and commissioning of services in the district through our Child Safeguarding Practice Group
- Analyse, review and understand the key factors identified in cases where children have been harmed or die, and the changes that can be made to services to address these factors through the CDOP and the Child Safeguarding Practice Group
- Provide high quality multi-agency training to the children's workforce, and evaluate the impact of that training to support a skilled and effective workforce through our Learning and Development Group
- Identify and protect children who are vulnerable and respond to emerging threats through our Vulnerable and Exploited Group.

2. Legislation and Context

Working Together to Safeguard Children 2018 clarifies that the three safeguarding partners in relation to a local authority area are defined under the Children Act 2004 (as amended by the Children and Social Work Act 2017) as:

- The Local Authority
- A Clinical Commissioning Group for an area any part of which falls within the local authority area
- The Chief Officer of Police for an area any part of which falls within the local authority area and that they have a shared and equal duty to make arrangements to work together to safeguard and promote the welfare of all children in a local area.

To fulfil this role, the three safeguarding partners must set out how they will work together and with any relevant agencies. Relevant agencies are those organisations and agencies whose involvement the safeguarding partners consider may be required to safeguard and promote the welfare of children with regard to local need.

The purpose of these local arrangements is to support and enable local organisations and agencies to work together in a system where:

- Children are safeguarded and their welfare promoted
- Partner organisations and agencies collaborate, share and co-own the vision for how to achieve improved outcomes for vulnerable children
- Organisations and agencies challenge appropriately and hold one another to account effectively
- There is early identification and analysis of new safeguarding issues and emerging threats
- Learning is promoted and embedded in a way that local services for children and families can become more reflective and implement changes to practice
- Information is shared effectively to facilitate more accurate and timely decision making for children and families
- Local data from all agencies is developed to strategically identify and respond to the underlying conditions and factors that lead to the need for help and protection

In order to work together effectively, safeguarding partners with other local organisations and agencies should develop processes that:

- Facilitate and drive action beyond usual institutional and agency constraints and boundaries

- Ensure the effective protection of children is founded on practitioners developing lasting and trusting relationships with children and their families

To be effective, these arrangements should link to other strategic partnership work happening locally to support children and families. This will include other public boards including Health and Wellbeing Boards, Adult Safeguarding Boards, Channel Panels, Improvement Boards, Community Safety Partnerships, the Local Family Justice Board and Multi-Agency Public Protection Arrangements.

The Wakefield Safeguarding Children Partnership arrangements reflect the fundamental legislative changes to the Children Act 2004 (as amended by the Children and Social Work Act 2017) which are covered within Working Together to Safeguard Children 2018.

3. Leadership

Safeguarding Partnership Executive

The Safeguarding Partnership Executive oversees the Wakefield Safeguarding Children Partnership. Membership consists of the three key partners and relevant agencies that have been identified as Education and Inclusion and nominated Head Teacher representatives from Secondary Schools, Primary Schools and Special Schools.

The **three lead safeguarding partners** are:

- West Yorkshire Police: District Commander
- Wakefield Council: The Corporate Director of Children and Young People Services
- Wakefield Clinical Commissioning Group: Chief Nurse

In Wakefield it is a priority for senior leaders to have a direct line of sight of practice to respond quickly to the needs of children in Wakefield. The **Safeguarding Partnership Executive** assists this priority through meeting quarterly. Six weekly meetings will be held in the initial stages of implementation of the plan. The effectiveness of the partnership in safeguarding and promoting the welfare of children and young people is reviewed through receiving direct reports from the **Learning and Development Group, Child Safeguarding Practice Group, Vulnerable and Exploited Group, Safeguarding Effectiveness Group** and the **Child Death Overview Panel**.

The **Safeguarding Partnership Executive** develops, manages and aligns the Business Plan to other Boards. Strategic direction is informed through reporting from the group chairs via the WSCP Business Manager and attendance at meetings where a specific report is required. **The Safeguarding Partnership Executive** agrees the Annual Report, implements a Senior Leadership Visiting Programme (please see section on Transparency) and acts as a function for quality assurance.

Relevant Safeguarding partners, and specifically subgroup chairs, can escalate safeguarding concerns to the Safeguarding Partnership Executive for discussion as an agenda item. Relevant Safeguarding partners can also request to attend a Safeguarding Partnership Executive meeting to discuss a specific issue. The Safeguarding Partnership Executive may also co-opt partners to report on safeguarding matters.

Multi-Agency Safeguarding Children forum

The **Safeguarding Partnership Executive** will work in partnership with all relevant agencies, and will ensure they are fully involved in all executive actions through the **Multi-Agency Safeguarding Children forum (MASC)**

The MASC forum will include the wider partnership with responsibility for services support to children and families in the local area. This includes the current membership of the Safeguarding Board and any other relevant partners identified. The MASC membership also includes the voluntary sector, practitioners, parents/carers and young people.

The MASC reviews outcomes of Local Child Safeguarding Practice Reviews, facilitates challenge around safeguarding practice, considers solutions and disseminates learning across the partnership and community. The MASC is chaired by the **Independent Scrutineer** (see section on Transparency) and meets twice a year. Information from the forums is incorporated into the reports of the Independent Scrutineer to the Safeguarding Partnership Executive to assist direction and planning.

All the relevant safeguarding partner agencies of the MASC forum are represented on WSCP groups and task and finish groups. These groups assist and inform the Safeguarding Partnership Executive in carrying out essential safeguarding work.

Relevant agencies are those organisations and agencies whose involvement the safeguarding partners consider is required to safeguard and promote the welfare of local children (please refer to appendix 3).

4. Transparency and Scrutiny

Working Together 2018 states that the role of independent scrutiny is to provide assurance in judging the effectiveness of multi-agency arrangements to safeguard and promote the welfare of all children in a local area, including arrangements to identify and review serious child safeguarding cases. Independent scrutiny is part of a wider system that includes the independent inspectorates' single assessment of the individual safeguarding partners and the Joint Targeted Area Inspections. Scrutiny needs to be objective, constructive and reflective to drive continuous improvement.

Independent Scrutiny of the WSCP will be provided by an Independent Scrutineer and through Peer Review. Scrutiny of the Safeguarding Partnership Executive is realised through an assessment of the effectiveness of the arrangements in safeguarding children.

Independent Scrutineer

An **Independent Scrutineer** will be appointed by the **Safeguarding Partnership Executive** and act as a critical friend encouraging reflection on practice and an openness to improving services. The appointment of the **Independent Scrutineer** will be completed by September 2019

The **Independent Scrutineer**:

- Reviews the work of the **Safeguarding Effectiveness Group** on a quarterly basis including an analysis of the data set and a review of the progress of multi-agency case File audits (MACFA) action plans
- Reviews the S11 and S175 reports and action plans
- Reviews the progress and impact of Local Safeguarding Child Practice Review action plans
- Provides a report to the **Safeguarding Partnership Executive** quarterly detailing progress and highlighting areas which require focus for improvement and attends as requested
- Provides a report to the Chief Executive of the Local Authority, the Chief of Police and the Chief Officer of the CCG and meets with them as requested
- Chairs the MASC forum

A twelve-month review of the new safeguarding partnership arrangements will be completed by the independent Scrutineer in September 2020.

Peer Review

In addition to the Independent Scrutineer post, reciprocal arrangements with neighbouring authorities will be developed to work across the region to review the effectiveness of the multi-agency safeguarding arrangements and to learn from best practice across the region. The

Peer Review will report to the **Safeguarding Effectiveness Group**. The **Safeguarding Partnership Executive** considers a response to recommendations. Identified actions are passed to the relevant groups.

5. A Responsive Partnership

Children and Young People Shaping the Future of our Services

The WSCB is committed to improving services and outcomes for children and young people through consultation. Assurance of safeguarding arrangements and practice is achieved through challenge and partnership events with children and young people and community consultation events.

Children and young people will:

- Contribute to the Annual Report
- Participate in the S11 challenge events
- Provide feedback on services through involvement in multi-agency case file audits
- Be involved in shaping the approach of the WSCP through engagement in specific pieces of work

Wakefield is putting into place a Voice and Influence Operating Model which will be supported by a Voice and Influence Co-ordinator who will be the channel for the voice of the children and young people across Wakefield. The WSCP will link into this forum to ensure that views and ideas from a wide range of children are sought on all relevant matters.

Learning from our Practitioners

The WSCP engages with practitioners through a practitioner forum. Thematic issues for discussion are identified by the **Safeguarding Partnership**. The forum meets on a quarterly basis. Feedback from practitioners is reported directly to the **Safeguarding Partnership Executive**.

Members of the **Safeguarding Partnership Executive** will undertake visits of services, view frontline practice and speak to practitioners. Each member undertakes a visit on a quarterly basis. Services requiring visits are agreed by the **Safeguarding Partnership Executive** and this will be linked to Multi-Agency auditing arrangements to develop a full understanding of the quality of service. These could be services where it has been identified that improvements in practice are required or where there is a current thematic focus. Feedback of visits is reported into the **Safeguarding Partnership Executive**. Identified recommendations are agreed and disseminated to the appropriate managers. Progress is monitored through the **Safeguarding Partnership Executive** Action Plan at the Safeguarding Effectiveness Group.

6. Learning from Good Practice and Reviews

Local Child Safeguarding Practice Reviews are completed by the **Child Safeguarding Practice Group** as required by Working Together 2018. The group undertakes a rapid review of circumstances surrounding the death or serious injury to children or young people that appear to meet the criteria in Working Together, 2018. The group recommends to the **Safeguarding Partnership Executive** whether or not a case meets the criteria for a LCSPR, identifies and manages reviews. It is the responsibility of the group to notify the National Child Safeguarding Practice Review Panel of serious safeguarding incidents. The group develops and implements action plans and links into the **Learning and Development Group** to disseminate learning.

Reviews will be completed and published within six months unless there are extenuating circumstances such as an ongoing criminal investigation, inquest or future prosecution. Any delay to the completion or publication of a review will be approved by the **Safeguarding Partnership Executive** and the reasons notified to the National Child Safeguarding Practice Review Panel and Secretary of State. In some circumstances the **Safeguarding Partnership Executive** may consider it inappropriate to publish a review report in which case arrangements will be made to publish information about the improvements that should be made following the review. The **Safeguarding Partnership Executive** will set out for the Panel and the Secretary of State the justification for any decision not to publish the report.

Publication of Child Safeguarding Practice Reviews or information about the improvements that should be made will be via the partnership website. The NSPCC maintains a national case review repository where case reviews remain available electronically for five years.

7. Child Death Overview Panel

The **Child Death Overview Panel** (CDOP) remains a function that is overseen by local safeguarding arrangements in Working Together to Safeguard Children (2018). Wakefield has in the past held a single panel: it has been agreed to amalgamate Wakefield with the Calderdale and Kirklees panel in order to increase the footprint for the three areas to comply with Working Together to Safeguard Children 2018.

The benefits are greater learning from a larger cohort and improvements in the way learning is cascaded to front line staff across the three localities. The three localities are developing shared systems, processes and ways of working in consultation with stakeholders. The Transitional Guidance states that new CDOP arrangements must be in place by 29th September 2019, however Wakefield and the areas intend to operate as a single panel from June 2019 and there will be a process thereafter to review arrangements and agree how best to share learning to drive improvement. CDOP will continue to be chaired by a Public Health professional and serviced by the WSCP administration team. Learning from the panel is reported directly to the **Safeguarding Partnership Executive**.

8. A Well Informed Multi-Agency Workforce

Learning and development across the multiagency partnership is facilitated by the **Learning and Development Group**. This group is responsible for devising and delivering the Training Plan across the partnership and co-ordinates the multi-agency child safeguarding conferences. The group links into the **Safeguarding Effectiveness Group** and **Child Safeguarding Practice Group** through the WSCP Business Manager. Terms of reference for the group includes the dissemination of learning from audits and LSCPR's through training, conferences, social media, the website and reading materials.

The group will provide multi-agency training guided by training needs analysis and learning from reviews and audit. The partnership is committed to providing a comprehensive multi-agency training programme which includes the following elements:

- **Core safeguarding training courses** – these provide a foundation for good multi-agency safeguarding practice with the opportunity to attend refresher events to keep knowledge up to date. These courses are offered regularly throughout the year to enable all partners to access as and when required.
- **Subject specific training events, and seminars** – these provide an opportunity to explore safeguarding children issues in greater depth. These courses vary from year to year, depending on the safeguarding themes identified both nationally and locally. The Training Programme is flexible and adaptable to ensure that the needs of the partnership workforce are met and additional courses will be arranged according to demand.
- **E learning - a suite of safeguarding children courses**, which are suitable for practitioners needing an introduction to a subject or wishing to refresh their knowledge around a subject. A broad range of courses are offered including the four key safeguarding issues: neglect, sexual abuse, physical abuse and emotional abuse, with additional modules covering specific safeguarding issues.

9. Understanding our Strengths and Areas for Development

Safeguarding Effectiveness Group

Analysis of the effectiveness of the WSCP in safeguarding children is provided by the **Safeguarding Effectiveness Group** through data analysis and multi-agency audit. This group oversees multi-agency audits and reviews single agency audits. The group links directly with the **Learning and Development Group** to disseminate learning. The group works closely with children's social care PBI, Quality Assurance Lead and performance and quality officers in partner services. The group develops and leads an audit cycle which is responsive to areas of concern and includes a programme of re-audit/ dip sampling to evidence progress in safeguarding practice.

The audit cycle will reflect the priorities for safeguarding children in Wakefield and will be informed by:

- Child Safeguarding Practice Reviews
- Performance indicators
- The need to further explore issues that have caused of concern, including those highlighted through previous audits
- Feedback from learning and development, management forums or policy implementation
- The outcomes from audit work will be presented to the **Learning and Development Group** for consideration of any further action required.
- Joint Targeted Area Review (JTAI) themes

Interagency Safeguarding Children Procedures

The Safeguarding Effectiveness Group is responsible for agreeing and updating interagency safeguarding procedures. The interagency safeguarding children procedures apply across Wakefield and across West Yorkshire through the West Yorkshire Consortium. They provide a clear framework under which organisations will work together to safeguard children. The procedures are regularly updated to take account of local and national learning and any changes in legislation or statutory guidance.

10. Identifying our Vulnerable Children and Emerging Threats

Vulnerable and Exploited Group

Working Together 2018 defines contextual safeguarding as threats to the welfare of children through vulnerability to abuse or exploitation from outside their families.

'These extra-familial threats might arise at school and other educational establishments, from within peer groups, or more widely from within the wider community and/or online. These threats can take a variety of different forms and children can be vulnerable to multiple threats, including: exploitation by criminal gangs and organised crime groups such as county lines; trafficking, online abuse; sexual exploitation and the influences of extremism leading to radicalisation. Extremist groups make use of the internet to radicalise and recruit and to promote extremist materials. Any potential harmful effects to individuals identified as vulnerable to extremist ideologies or being drawn into terrorism should also be considered'

Under the new Safeguarding Partnership Arrangements, outlined in Working Together 2018, the three Key Partners have a duty to support and enable local organisations and agencies to work together in a system where children are safeguarded and their welfare promoted.

The **Vulnerable and Exploited Group** has been established to develop, monitor and challenge the work of the Safeguarding Partnership across Wakefield in respect of Contextual Safeguarding. Examples include Child Sexual Exploitation (CSE) and Child Criminal Exploitation (CCE) and other groups of vulnerable children Missing (Home, Education & Care); Modern Slavery (including trafficked children, domestic servitude, and labour exploitation), Radicalisation (both in terms of general religious, political or ideological extremism and those at risk of being drawn into terrorist activity as described by the PREVENT agenda), Harmful Sexual Behaviour and any other risk groups. The group reports directly to the **Safeguarding Partnership Executive**.

11. Partnership, Regional and National Links

The WSCP will liaise with other partnerships, such as the Safeguarding Adult Board, Community Safety Partnership, Children and Young People Partnership and Health and Wellbeing Board to counter duplication and share information. The WSCP will be represented at these boards by one of the three key partners as a minimum. The usual representation will be WY Police at the Community Safety Partnership, the Local Authority at the Children and Young People Partnership and the CCG at the Health and Wellbeing Board. The WSCP will also liaise with the Youth Voice Co-ordinator the Area Development and Communities Team to engage young people and communities in the safeguarding arrangements. This work will be led by the Business Manager of the WSCP.

The WSCP is committed maintaining our existing regional and national links and will continue to work with the West Yorkshire Consortium. The Business Manager will also lead on and attend any national initiatives.

12. Arrangements

Funding

All activities undertaken on behalf of the WSCP are funded equitably and proportionately by the three safeguarding partners. The Executive will agree future funding formulas

The role of the WSCP staff

The WSCP employs a team of support staff as agreed by the **Safeguarding Partnership Executive**, who are hosted by the Council. The WSCP staff ensure that the **Safeguarding Partnership Executive** is provided with data and intelligence in order to be fully appraised of the effectiveness of help, including early help, being provided to children and their families.

Responsibilities include:

- Analysis of multi-agency statistics, performance measures and outcomes
- Scrutiny of rolling reports
- Section 11/ Section 175 self-assessments and challenge events
- Multi-agency audits
- Practitioner and partnership challenge events
- Child Death Overview Panel activity
- Child Safeguarding Practice Reviews
- Compilation of the Annual Report

Annual Report

The **Safeguarding Partnership Executive** will produce a 12-monthly report on safeguarding arrangements in Wakefield. The report will be available on the WSCP website. The priority and focus of the new arrangements will be determined by the **Safeguarding Partnership Executive** through learning from the 12-month report process and through WSCP performance management and quality assurance.

The annual report will be a public document and will include:

- Evidence of the impact of work of the safeguarding partners and relevant agencies on outcomes for children and families
- An analysis of any areas where there has been little or no evidence of progress on agreed priorities
- A record of actions taken by the safeguarding partners in the report's period (or planned to be taken) to implement the recommendations of any child safeguarding practice reviews

- Ways in which partners have sought and utilised feedback from children, young people and families to inform their work and influence service provision.

The annual report will be endorsed by the MASC forum. Following endorsement, the report will be distributed through relevant routes across the three safeguarding partners. The report will be received by Overview and Scrutiny (O&S) committee which will also have the opportunity to request an interim report. It will also be distributed across relevant partnership arrangements and to the Police and Crime Commissioner.

The annual report will be subject to independent scrutiny by the Independent Scrutiny Officer(s) prior to final publication.

Threshold Document

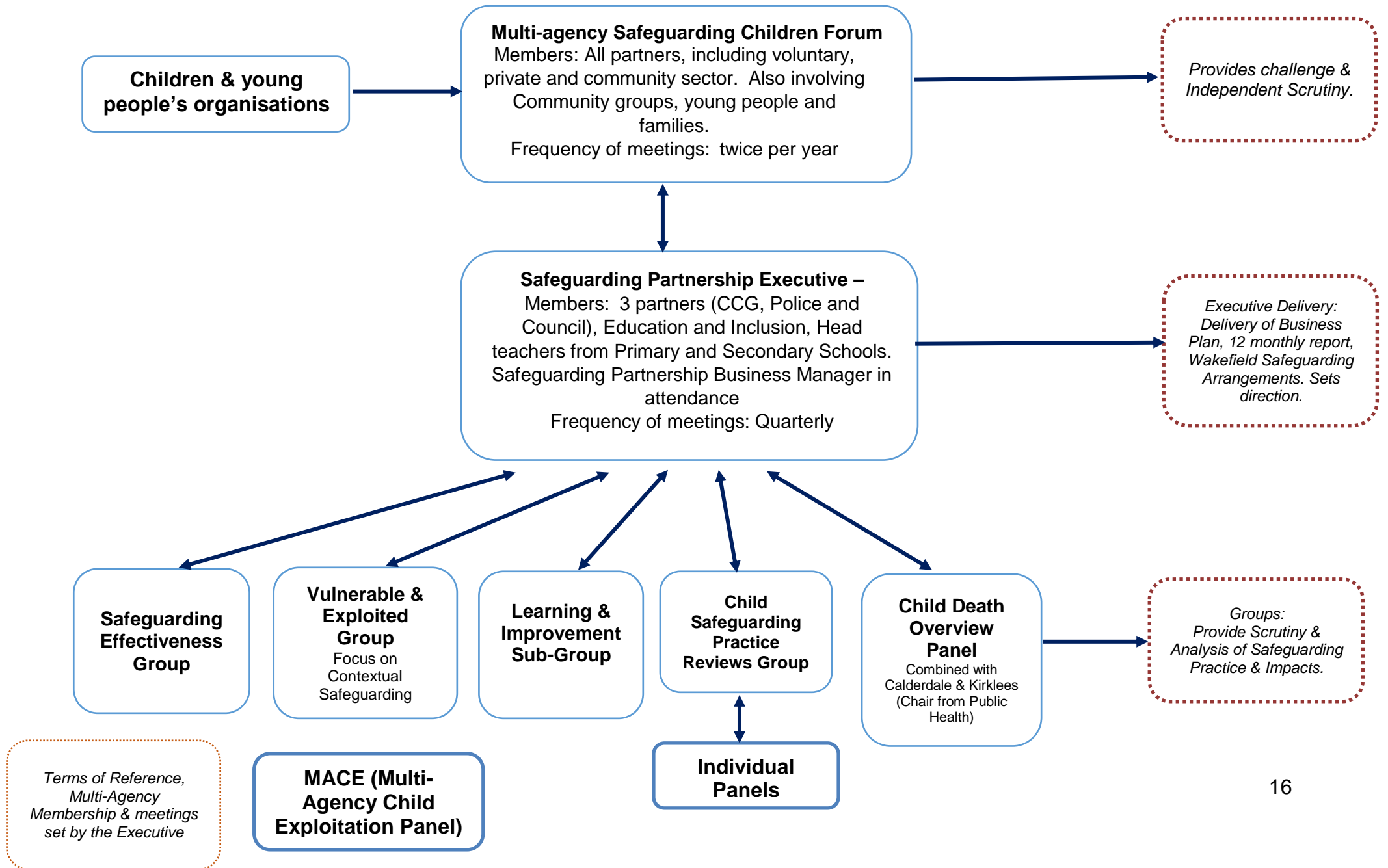
The WSCP will publish a threshold document, which sets out the local criteria for action in a way that is transparent, accessible and easily understood. This will be overseen by the Safeguarding Partnership Executive and include the process for the early help assessment and the type and level of early help services to be provided, the criteria, including the level of need, for when a case should be referred to local authority children's social care for assessment and for statutory services under the relevant sections of The Children Act and as defined in Working Together 2018

13. Disputes and Escalation

For professional disputes involving child protection procedures the Safeguarding Partnership-Resolving Multiagency Professional Disagreement and Escalation procedures are followed. As a last resort the three partners act as an arbitrator/mediator in the case of protracted or intractable disagreements. Disputes amongst the Safeguarding Partnership Executive will be referred for mediation to the independent scrutineer.

Disputes amongst the Safeguarding Partnership Executive which cannot be resolved in any other way will be referred to the Chief Officer/ Chief Executive of the three key partners for resolution.

Appendix 1 WAKEFIELD SAFEGUARDING CHILDREN PARTNERSHIP



Appendix 2- WAKEFIELD SAFEGUARDING CHILDREN PARTNERSHIP SUMMARY

Wakefield Safeguarding Children Partnership-WSCP

The Safeguarding Partnership Executive

The three nominated officers and relevant partners meet six weekly and are known as the WSCP **Safeguarding Partnership Executive**. The **Safeguarding Partnership Executive** develops, manages and aligns the Business Plan to other Boards. Strategic direction is informed through reporting from the group chairs via the WSCP Business Manager and attendance at meetings where a specific report is required. Agrees the annual report. Implements Senior Leadership Visiting Programme across the partnership. Membership includes, Education and Inclusion and a Head Teacher representative from Secondary Schools and Primary Schools. The meeting is chaired by one of the three nominated officers on an annual rotational basis. Independent scrutiny of the arrangements is provided by the **Independent Scrutineer** and Peer Review.

The Safeguarding Partnership Executive is supported through the Multi-Agency Safeguarding Children forum (MASC) and five sub groups

Multi-Agency Safeguarding Children forum (Chair- Independent Scrutineer)	Child Safeguarding Practice Group (Chair- Service Manager Quality and Standards)	Vulnerable & Exploited Group (Chair- DCI West Yorkshire Police)
<p>The Multi-Agency Safeguarding Children forum (MASC) includes the wider partnership with responsibility for services support to children and families in the local area. Includes the current membership of the Safeguarding Board and any other relevant partners identified. The MASC membership also includes the voluntary sector, practitioners, parents/carers and young people.</p> <p>The MASC reviews outcomes of Local Child Safeguarding Practice Reviews, facilitates challenge around safeguarding practice, considers solutions and disseminates learning across the partnership and community.</p>	<p>The Child Safeguarding Practice Group considers serious incidents involving children and makes recommendations to the Safeguarding Partnership Executive whether criteria are met for undertaking a Local Child Safeguarding Practice Review. It liaises with the National Panel, facilitates rapid reviews and is responsible for the process for all forms of learning reviews and oversees the completion.</p>	<p>The group oversees the multi-agency responses in relation to contextual safeguarding. This includes children who may be vulnerable and those at risk of exploitation within the district from CSE, CCE, gangs, human trafficking, being missing from home, care or school and harmful sexual behaviour</p>
Safeguarding Effectiveness Group (Chair- Service Director Strategy and Innovation)	Learning and Development Group (Chair-Assistant Director of Nursing SWYPT)	Child Death Overview Panel (Chair – Public Health Wakefield Council)
<p>The group is responsible for organising of multi-agency audits, and review of partner agencies single agency audits and through analysing performance data in accordance with the agreed multi agency data set within the partnership's Performance Framework. The group also oversees multi-agency policy.</p>	<p>The groups is responsible for ensuring that high quality, up to date, effective and child focused multi-agency training is provided alongside single agency safeguarding training</p>	<p>The panel aims to understand better how and why children in Wakefield die and use the findings to take action to prevent other deaths and improve the health and safety of children and young people. Amalgamated with the Kirklees and Calderdale CDOP panels</p>

Appendix 3- RELEVANT PARTNERS

Bradford District Care Trust (BDCT)
CAFCASS
Community Rehabilitation Company (CRC)
Early Years Representatives
Mid Yorkshire Hospitals NHS Trust (MYHT)
NHS England
National Probation Service (NPS)
Primary and Secondary School Representation
Public Health
South West Yorkshire Partnership NHS Foundation Trust (SWYPFT)
Spectrum
Turning Point
Voluntary and Community Sector (VCS)
Wakefield College
Wakefield District Housing (WDH)
WMDC Education and Inclusion
West Yorkshire Fire Service