

Wakefield Safeguarding Children Partnership

Local Multi-Agency Safeguarding Arrangements (MASA)

December 2024






# Introduction

---




This document outlines the Multi-Agency Safeguarding Arrangements (MASA) for the Wakefield district, in line with [Working Together to Safeguard Children \(WTSC\) 2023, Chapter 2: Multi-agency safeguarding arrangements](#). The Partnership is known as Wakefield Safeguarding Children Partnership (WSCP) and is aligned with the Wakefield District local authority area.

## The Lead Safeguarding Partners:

---

		
Tony Reeves	Rob Webster	John Robins QPM DL
Chief Executive	Chief Executive	Chief Constable
<b>Wakefield Metropolitan District Council</b>	<b>NHS West Yorkshire Integrated Care Board</b>	<b>West Yorkshire Police</b>

## The Delegated Safeguarding Partners:

		
Vicky Schofield	Penny McSorley	Richard Close
Corporate Director for Children and Young People's Services	Director of Nursing and Quality	Chief Superintendent
<b>Wakefield Metropolitan District Council</b>	<b>NHS West Yorkshire Integrated Care Board</b>	<b>West Yorkshire Police</b>



Independent Scrutiny is undertaken by an Independent Scrutineer arrangement and is currently fulfilled by Stuart Smith.

The Partnership Chair is an arrangement, rotated annually between the three Delegated Safeguarding Partners and is currently fulfilled by Richard Close, Chief Superintendent, West Yorkshire Police.

# What WSCP is and what it does

WSCP is a statutory body, led by an Executive with its purpose to work together in a system where:

## Children



Children are safeguarded and their welfare is promoted

## Organisations



- Organisations work together, share and have joint ownership to improve outcomes for children
- Organisations challenge appropriately and hold one another to account

## Safeguarding



- There is early identification and analysis of emerging safeguarding risks

## Learning



- Learning is promoted in a way that organisations can become more reflective and improve services for children and families

## The Partnership's responsibilities include:

- Undertake safeguarding reviews following the death or serious injury to a child where abuse or neglect is suspected
- Review all the child deaths in the Wakefield District to identify learning
- Draw on any learning regionally and nationally by devising and delivering a range of learning for practitioners
- Review safeguarding practice and systems through data analysis and multi-agency quality assurance
- Oversee the districts multi-agency arrangements in respect of the prevention, identification, intervention, disruption and stopping of child exploitation
- Ensure all education settings receive up to date and accurate information and training to ensure they can effectively safeguard children in their settings

WSCP is a named partnership within [the district's overarching Children & Young People's Plan](#), leading on the delivery of the *Our Safety* priority, through implementing its three year WSCP delivery plan. Details of the delivery plan can be viewed on [the WSCP Plan on a Page](#).

# WSCP Structure

## Overview

---

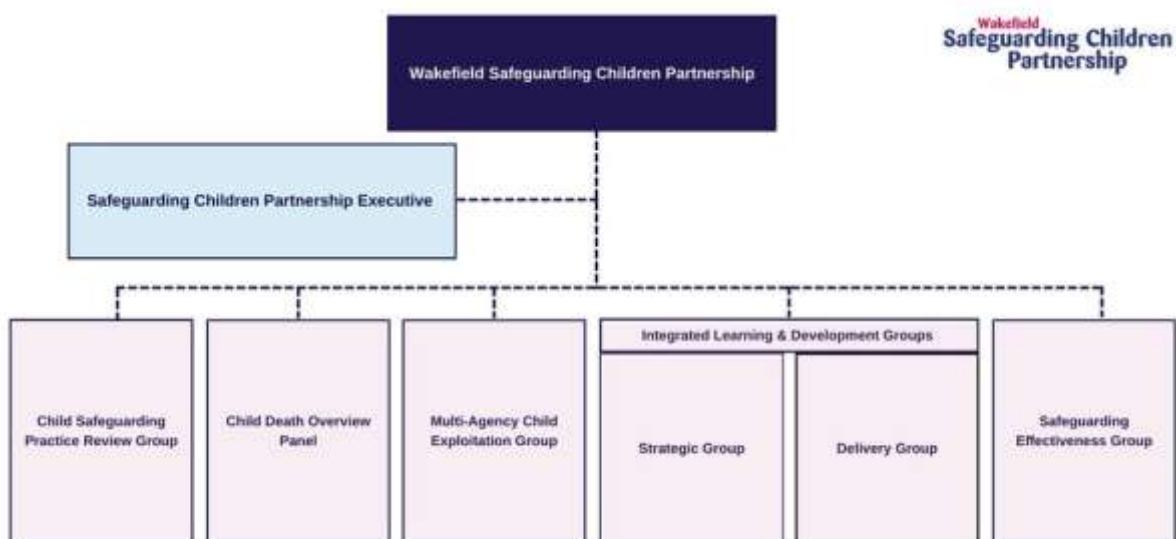
**WSCP has an established structure which comprises of an Executive and five sub-groups. It is within this structure as to how primarily safeguarding partners and relevant agencies work together to identify and respond to the needs of children.**

The sub-groups are the Child Safeguarding Practice Review Group (CSPRG), Child Death Overview Panel (CDOP), Multi-Agency Child Exploitation (MACE) Group, Learning and Development (L&D) Group, and the Safeguarding Effectiveness Group (SEG). The function of the Executive is to provide strategic

oversight, scrutiny, and assurance of the work the partnership undertakes to ensure multi-agency safeguarding arrangements in Wakefield are effective.

Each sub-group has specific responsibilities and identifies, discusses, develops, and delivers a range of multi-agency safeguarding information, resources, assurance, and learning opportunities which are as described below within *Figure 1 – Structure of WSCP*. The Integrated Learning and Development Group is split into a Strategic and Delivery group to enable the partnership to develop a bespoke learning and development offer for the workforce which is aligned to need as identified from safeguarding practice review and quality assurance activity.

In addition to the structure overleaf, the three delegated safeguarding partners meet four times a year as part of a Statutory Leads Meeting, along with an annual conversation taking place between the three Lead Safeguarding Partners, three Delegated Safeguarding Partners, Independent Scrutineer and WSCP Business Manager.



*Figure 1 – Structure of WSCP*

### **Inclusion of Education Providers**

**All education providers, including schools (maintained, independent, academies and free-schools), colleges, early years and childcare providers, and alternative provision have both direct involvement with WSCP and broader touch points within the wider district partnership and board structures to be engaged within the multi-agency safeguarding arrangements meaningfully, which *figure 2 - Summative structure of wider partnership and boards across the Wakefield District* illustrates.**

At an executive level, the combination of a close connection with the Education & Inclusion Executive, which comprises of Multi-Academy Trust Chief Executive Officers, Corporate Director for Children and Young People's Services and the Service Director for Education & Inclusion, WSCP Business Manager, coupled with a Multi-Academy Trust Chief Executive Officer representative at the Safeguarding Children Partnership Executive provides a high level of engagement and influence within the multi-agency safeguarding arrangements.

At strategic levels, the role of the Headteacher Forum, Integrated Education Strategic Partnership and Early Years Partnership Board provide key touch points to feed in and shape the work of the partnership. There are direct feeds into and from the Safeguarding Children Partnership Executive to these partnerships and forums.

From an operational perspective, the Designated Safeguarding Leads Forum and school and early years representatives at WSCP sub-groups enable the partnership to engage directly with those working or close to frontline practice. The Designated Safeguarding Lead Forum is open to all schools where practitioners receive key safeguarding information, along with sharing school views and experiences which directly report to the Executive, with the Executive having a communication flow in place to report back.

Underpinning this approach is the role of the Safeguarding Education Advisor, which sits within the WSCP Business Unit. The Advisor supports all schools and colleges, delivering the Designated Safeguarding Lead, Governor and additional school safeguarding training, developing a school safeguarding template policy, undertaking the school safeguarding audit (Section 175 audit), maintaining the education section of the WSCP website and being a consistent source of support for all schools and colleges in relation to safeguarding.

## Voice of Children and Families

**The voice of children and families within the multi-agency safeguarding arrangements is sought through the Children and Young People’s Partnership Board, who create and develop the Children and Young People’s District Plan which WSCP play a lead contributing role in delivering.**

Progress made against the plan and wider safeguarding needs is reported to the Children and Young People’s Partnership Board and to the bi-yearly Build Our Futures Summits which are coordinated and ran by children. In addition to these formal structures of reporting, the partnership includes the voice of children and families throughout its multi-agency quality assurance activity as well as pursuing a model of co-production across its safeguarding work where determined it is required and would benefit when developing aspects

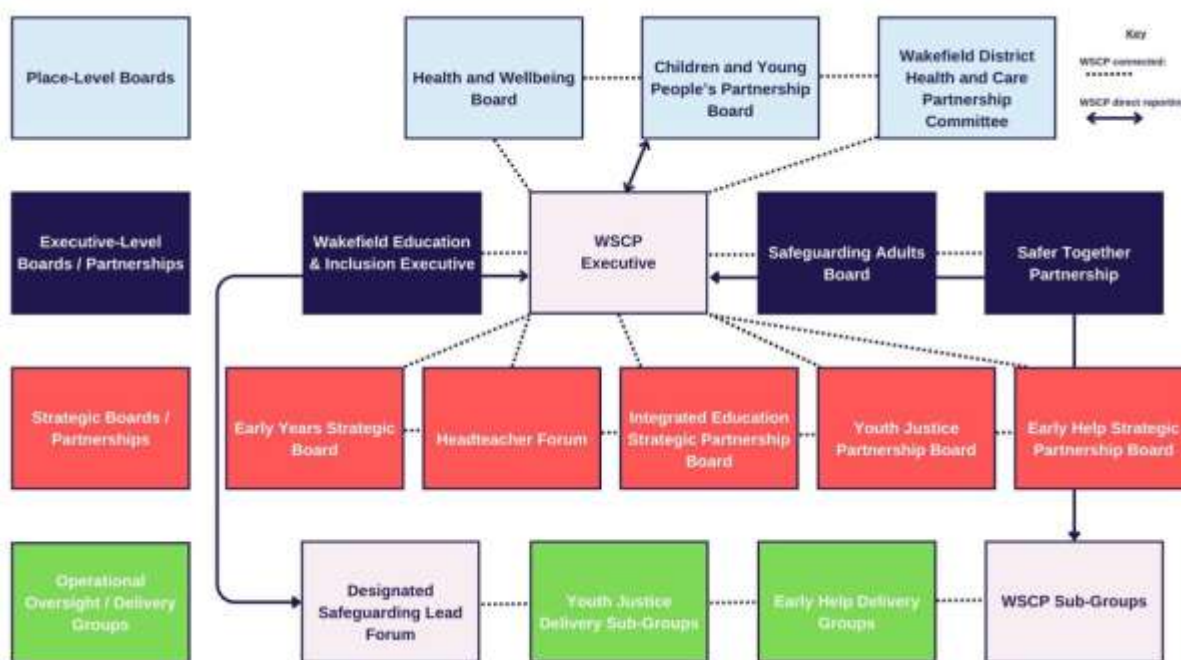


Figure 2 – Summative structure of wider partnership and boards across the Wakefield District

such as resources, learning and development offers, campaigns and procedures.

# Our Meetings

## WSCP Executive

---



**The WSCP Executive provides strategic direction for the partnership in line with national, regional, local objectives and priorities. The Executive is responsible for monitoring all the activity the partnership delivers, overseeing the work of its sub-groups, Business Unit and partners.**

The WSCP Delivery Plan is maintained by the Executive who scrutinise progress of the 13 priorities via quarterly scrutiny and assurance meetings. These receive deep-dive reports from priority leads alongside a performance and impact data set<sup>1</sup> to measure against the success indicators set out within the plan.

The Executive receives a quarterly multi-agency vital signs data set<sup>2</sup> which is analysed by safeguarding partners to identify areas across the system which are working effectively, requiring monitoring and those which require action to strengthen. The Executive will either implement the required action or action the Safeguarding Effectiveness Group to implement and report back on progress. The data set comprises of indicators which are aligned to the partnership's threshold document, the Continuum of Need, providing a holistic view of universal, early help, and targeted support, in addition to statutory intervention.

The Executive meets 6 times a year and is chaired by a Delegated Safeguarding Partner which is rotated on an annual basis.

Core membership, with any additional representatives co-opted as required:

<b>Organisation / Sector</b>	<b>Executive Member</b>
<b>Wakefield Safeguarding Children Partnership Business Unit</b>	<ul style="list-style-type: none"> <li>• Independent Scrutineer</li> <li>• Business Unit Manager</li> <li>• Business Coordinator</li> </ul>
<b>Wakefield Metropolitan District Council</b>	<ul style="list-style-type: none"> <li>• Corporate Director of Children &amp; Young People’s Services (co-chair)</li> <li>• Service Director for Children’s Social Care</li> <li>• Service Director for Partnerships, Strategy &amp; Innovation</li> <li>• Service Director for Education &amp; Inclusion</li> <li>• Director for Public Health</li> </ul>
<b>West Yorkshire Police</b>	<ul style="list-style-type: none"> <li>• Chief Superintendent (co-chair)</li> </ul>
<b>NHS West Yorkshire Integrated Care Board</b>	<ul style="list-style-type: none"> <li>• Director of Nursing (co-chair)</li> <li>• Designated Nurse for Safeguarding Children and Children in Care</li> </ul>
<b>Voluntary Sector Community Enterprise</b>	<ul style="list-style-type: none"> <li>• Chief Executive Young Lives Consortium</li> <li>• NOVA VCSE Voices</li> </ul>
<b>Education</b>	<ul style="list-style-type: none"> <li>• Multi-Academy Trust Chief Executive Officer</li> <li>• Maintained Secondary School Headteacher</li> </ul>

# Child Safeguarding Practice Review Group (CSPRG)

---



**The CSPRG's role is to fulfil the statutory duties under the Children and Social Work Act 2017 and as described under Chapter 5: Learning from serious child safeguarding incidents within Working Together to Safeguard Children 2023. The CSPRG:**

1. defines serious safeguarding cases which raise issues of importance in relation to the area, and
2. where reviews are undertaken, identify and consider improvements that should be made to improve safeguarding systems and practice, and promote the safeguarding and welfare of children

The CSPRG undertakes Rapid Reviews and where it is recommended a further review is required, once affirmed by the Executive and communicated to the Child Safeguarding Review Panel, will commission an Independent Reviewer to carry out a Child Safeguarding Practice Review.

As laid out under Chapter 5: Learning from serious child safeguarding incidents within Working Together to Safeguard Children 2023, WSCP completes and submits Rapid Reviews within 15 working days to the Child Safeguarding Practice Review Panel and a Child Safeguarding Practice Review published no later than six months from the date a decision to initiate a review agreed.

The learning generated from reviews, is typically distributed to the appropriate sub-group within WSCP governance. For example, where recommendations are to provide assurance, the CSPRG would likely maintain ownership, findings which are centred on workforce development are sent to the Integrated Learning & Development Sub-Group and where systems and procedures require strengthening the Safeguarding Effectiveness Group would oversee implementation. Once recommendations have been evidenced as complete and there has been time to allow developments to embed, the CSPRG holds practice review assurance events where services present further evidence to demonstrate what the impact of recommendations have been, what has changed as a result, and if there is still further work required which has arisen. In addition, Impact Evaluation Surveys are completed by frontline staff to gain direct insight as to how any system, practice and learning opportunities which has arisen from safeguarding reviews have changed their practice.

The meeting takes place four times per year, quarterly and is chaired by the Head of Service for Quality and Learning, Wakefield Metropolitan Council Children and Young People’s Services.

Core membership, with any additional representatives co-opted as required:

<b>Organisation / Sector</b>	<b>CSPRG Member</b>
<b>Wakefield Safeguarding Children Partnership Business Unit</b>	<ul style="list-style-type: none"> <li>• Independent Scrutineer</li> <li>• Business Unit Manager</li> <li>• Business Coordinator</li> <li>• Safeguarding Education Advisor</li> </ul>
<b>Wakefield Metropolitan District Council</b>	<ul style="list-style-type: none"> <li>• Head of Service for Safeguarding, Quality and Learning (Chair)</li> <li>• Head of Service for Early Intervention and Prevention</li> <li>• Service Manager for Youth Justice</li> <li>• Service Manager for Children’s Social Care</li> </ul>
<b>West Yorkshire Police</b>	<ul style="list-style-type: none"> <li>• Detective Chief Inspector for Safeguarding</li> </ul>
<b>NHS West Yorkshire Integrated Care Board</b>	<ul style="list-style-type: none"> <li>• Designated Nurse for Safeguarding Children and Children in Care</li> </ul>
<b>South West Yorkshire Partnership Foundation Trust</b>	<ul style="list-style-type: none"> <li>• Named Nurse for Safeguarding</li> </ul>
<b>Mid Yorkshire Teaching Trust</b>	<ul style="list-style-type: none"> <li>• Head of Safeguarding</li> <li>• Designated Doctor for Safeguarding Children</li> </ul>
<b>Harrogate and District NHS Foundation Trust</b>	<ul style="list-style-type: none"> <li>• Named Nurse for Safeguarding</li> </ul>

## Child Death Overview Panel (CDOP)

---



**Wakefield Metropolitan District Council and NHS West Yorkshire Integrated Care Board are responsible for the Child Death Review arrangements as set out under chapter 6: Child death reviews within Working Together to Safeguard Children 2023. Wakefield District, Kirklees and Calderdale have a tripart CDOP in place, which is responsible for:**

- Collecting and analysing information about each death with a view to identifying:
- Any factors which were present in a death which could be changed to prevent a similar death from occurring in the future
- Any case giving rise to the need for a review mentioned in regulation
- Any matters of concern affecting the safety and welfare of children in the area of the district
- Any wider public health or safety concerns arising from a particular health or from a pattern of deaths in that area, and
- Put in place procedures for ensuring that there is a coordinated response

In partnership with Kirklees Safeguarding Children Partnership and Calderdale Safeguarding Children Partnership, WSCP provide governance arrangements for child death review partners and co-ordinate CDOP.

The CDOP meets quarterly, four times a year, and is chaired by a senior representative from Public Health.

The CDOP reports to each Safeguarding Children Partnership and publishes an annual report which is accessible from:

[Wakefield Child Death Arrangements - Wakefield Safeguarding Children \(wakefieldscp.org.uk\)](https://wakefieldscp.org.uk)

The CDOP actively engages with the Yorkshire and Humber Regional CDOP Coordinator Meetings and Sub-Regional CDOP Coordinators meetings, sharing information to further develop understanding of child deaths across the region, share best practice and understand emerging challenges.

Core membership, with any additional representatives co-opted as required:

<b>Organisation / Sector</b>	<b>CDOP Member</b>
<b>Wakefield Safeguarding Children Partnership Business Unit</b>	<ul style="list-style-type: none"> <li>• Business Unit Manager</li> <li>• Business Coordinator</li> </ul>
<b>Wakefield Metropolitan District Council</b>	<ul style="list-style-type: none"> <li>• Children’s Social Care Service Manager</li> <li>• Children’s Social Care Service Manager – SEN Support</li> <li>• Service Manager, Children’s Public Health</li> </ul>
<b>West Yorkshire Police</b>	<ul style="list-style-type: none"> <li>• Serious Case Review Officer</li> </ul>
<b>NHS West Yorkshire Integrated Care Board</b>	<ul style="list-style-type: none"> <li>• Designated Nurse for Safeguarding Children and Children in Care</li> <li>• Named Nurse Safeguarding – Primary Care</li> </ul>
<b>Mid Yorkshire Teaching Trust</b>	<ul style="list-style-type: none"> <li>• Director of Midwifery and Women’s Health</li> <li>• Designated Doctor for Child Death’s – Kirklees</li> <li>• Perinatal Lead</li> <li>• Consultant Obstetrician and Gynaecologist</li> <li>• Lead Nurse Child Death Review</li> <li>• SUDIC Paediatrician</li> <li>• Deputy Head of Nursing for Children’s Services</li> </ul>
<b>Harrogate District Care Foundation Trust</b>	<ul style="list-style-type: none"> <li>• Named Nurse for Safeguarding</li> </ul>
<b>Primary Care – GP Surgery</b>	<ul style="list-style-type: none"> <li>• GP and Primary Care Representative</li> </ul>
<b>Hospice</b>	<ul style="list-style-type: none"> <li>• Advanced Nurse Practitioner (ANP)</li> <li>• Perinatal Midwife</li> </ul>

## Multi-Agency Child Exploitation (MACE) Group



**The MACE Group oversees the multi-agency response to child exploitation, scrutinising the work services provide to prevent, identify, disrupt and stop child exploitation. This is done so primarily through the analysis of performance data, profiling and quality assurance activity.**

The MACE is responsible for the creation, monitoring and progression of the MACE and Extra-Familial Harm Strategy, alongside maintaining the [Speak Up Stand Up Stop Exploitation section of the WSCP Knowledge Hub](#).

The meeting takes place quarterly, four times a year and is co-chaired by the Head of Service for Children’s Social Care and the Detective Chief Inspector, West Yorkshire Police.

Core membership, with any additional representatives co-opted as required:

Organisation / Sector	MACE Group Member
<p><b>Wakefield Safeguarding Children Partnership Business Unit</b></p>	<ul style="list-style-type: none"> <li>• Independent Scrutineer</li> <li>• Business Unit Manager</li> <li>• Quality, Policy and Development Officer</li> <li>• Business Coordinator</li> </ul>
<p><b>Wakefield Metropolitan District Council</b></p>	<ul style="list-style-type: none"> <li>• Head of Service for Localities, Integrated Front Door and Targeted Early Help (Co-chair)</li> <li>• Head of Service for Early Intervention and Prevention</li> <li>• Service Manager for Integrated Front Door and Children Vulnerable to Exploitation</li> <li>• Team Manager for Children Vulnerable to Exploitation</li> <li>• Service Manager for Youth Justice Service</li> <li>• Licensing Manager</li> </ul>

	<ul style="list-style-type: none"> <li>• Service Manager for Alternative Provision</li> </ul>
<b>West Yorkshire Police</b>	<ul style="list-style-type: none"> <li>• Detective Chief Inspector for Precision (Co-Chair)</li> <li>• Detective Inspector for Children Vulnerable to Exploitation</li> <li>• Detective Sergeant for Children Vulnerable to Exploitation</li> <li>• District Intelligence Analyst for Wakefield</li> </ul>
<b>NHS West Yorkshire Integrated Care Board</b>	<ul style="list-style-type: none"> <li>• Designated Nurse for Safeguarding Children and Children in Care</li> </ul>
<b>South West Yorkshire Partnership Foundation Trust</b>	<ul style="list-style-type: none"> <li>• Named Nurse for Safeguarding</li> </ul>
<b>Mid Yorkshire Teaching Trust</b>	<ul style="list-style-type: none"> <li>• Named Nurse for Safeguarding</li> </ul>
<b>Harrogate and District NHS Foundation Trust</b>	<ul style="list-style-type: none"> <li>• Named Nurse for Safeguarding</li> </ul>
<b>Spectrum Health</b>	<ul style="list-style-type: none"> <li>• Specialist Nurse for Safeguarding</li> </ul>
<b>Liaison and Diversion</b>	<ul style="list-style-type: none"> <li>• Team Manager</li> </ul>
<b>Wakefield District Housing</b>	<ul style="list-style-type: none"> <li>• Community Safety Manager</li> </ul>
<b>Ivison Trust</b>	<ul style="list-style-type: none"> <li>• Parent Liaison Officer</li> </ul>
<b>Young Lives Consortium</b>	<ul style="list-style-type: none"> <li>• Team Leader</li> </ul>

<b>School Representative</b>	<ul style="list-style-type: none"> <li>• Designated Safeguarding Lead</li> </ul>
<b>Turning Point</b>	<ul style="list-style-type: none"> <li>• Safeguarding Lead</li> </ul>
<b>Probation Service</b>	<ul style="list-style-type: none"> <li>• Senior Probation Officer</li> </ul>

## **Integrated Learning and Development (ILD) Groups: Strategic and Delivery**

---



**The ILD Strategic and Delivery Groups are responsible for responding to the multi-agency safeguarding learning and development of the needs of the children and family’s workforce by developing, coordinating and delivering multi-agency training, conferences, masterclasses and safeguarding resources.**

The Strategic Group makes decisions on the learning offers the partnership needs to develop. The learning offer is informed by local need identified through safeguarding practice reviews, quality assurance activity and any wider regional and national learning. Where learning is unable to be developed and delivered from within the partnership, the Strategic Group is able to commission a suitable external provider to meet this need.

The Delivery Group, taking a lead from the Strategic Group, creates and delivers the identified learning required, overseeing its implementation and reports on progress to the Strategic Group.

Via the Learning and Development Action Log, once learning has begun to be delivered, the impact is measured through a set of agreed Key Impact Measures consisting of analytical data, findings from quality assurance activity, and impact evaluations. This approach is underpinned by the [WSCP Learning & Improvement Framework](#) which describes the way in which quality assurance

and safeguarding practice review activity is interconnected with the learning offer the partnership delivers and how it is a cyclical approach.

Core membership, with any additional representatives co-opted as required:

<b>Organisation / Sector</b>	<b>ILD Strategic Member</b>	<b>ILD Delivery Member</b>
<b>Wakefield Safeguarding Children Partnership Business Unit</b>	<ul style="list-style-type: none"> <li>• Independent Scrutineer</li> <li>• Business Unit Manager</li> <li>• Quality, Policy and Development Officer</li> <li>• Project Support Officer</li> </ul>	<ul style="list-style-type: none"> <li>• Business Unit Manager</li> <li>• Quality, Policy and Development Officer (Chair)</li> <li>• Learning &amp; Development Officer</li> <li>• Safeguarding Education Advisor</li> </ul>
<b>Wakefield Metropolitan District Council</b>	<ul style="list-style-type: none"> <li>• Head of Service for Safeguarding, Quality and Learning (Co-Chair)</li> <li>• Head of Service for Early Intervention and Prevention</li> <li>• Service Manager for Children’s Public Health</li> <li>• Service Manager for Strategic Domestic Abuse Team</li> <li>• Interim Service Manager for Inclusion and Assessment Service</li> </ul>	<ul style="list-style-type: none"> <li>• Service Manager Targeted Early Help</li> <li>• Team Manager Quality and Learning Domestic Abuse Coordinator</li> <li>• Youth Justice Learning and Practice Development Coordinator</li> <li>• Health Improvement Specialist for Public Health</li> </ul>
<b>West Yorkshire Police</b>	<ul style="list-style-type: none"> <li>• Detective Chief Inspector for Safeguarding</li> </ul>	<ul style="list-style-type: none"> <li>• Detective Inspector for Child Safeguarding</li> </ul>

<b>NHS West Yorkshire Integrated Care Board</b>	<ul style="list-style-type: none"> <li>Designated Nurse for Safeguarding Children and Children in Care (Co-Chair)</li> </ul>	<ul style="list-style-type: none"> <li>Named Nurse Safeguarding – Primary Care</li> </ul>
<b>South West Yorkshire Partnership Foundation Trust</b>	<ul style="list-style-type: none"> <li>Associate Director of Nursing, Quality &amp; Professions</li> </ul>	<ul style="list-style-type: none"> <li>Named Nurse for Safeguarding</li> </ul>
<b>Mid Yorkshire Teaching Trust</b>	<ul style="list-style-type: none"> <li>Head of Safeguarding</li> </ul>	<ul style="list-style-type: none"> <li>Named Nurse for Safeguarding</li> </ul>
<b>Harrogate and District NHS Foundation Trust</b>	<ul style="list-style-type: none"> <li>Head of Safeguarding</li> </ul>	<ul style="list-style-type: none"> <li>Named Nurse for Safeguarding</li> </ul>
<b>Spectrum</b>	<ul style="list-style-type: none"> <li>Specialist Nurse for Safeguarding and Prevent Lead</li> </ul>	<ul style="list-style-type: none"> <li>Safeguarding Specialist</li> </ul>
<b>Young Lives Consortium</b>	<ul style="list-style-type: none"> <li>Chief Executive Officer</li> </ul>	<ul style="list-style-type: none"> <li>Team Leader</li> </ul>

## Safeguarding Effectiveness Group (SEG)



**The SEG is responsible for overseeing the performance of multi-agency safeguarding system, practice and procedures.** Primarily, the group does this by delivering the partnership’s quality assurance activity as outlined within the [WSCP Learning & Improvement Framework](#), taking direction from the Executive in completing action identified from the multi-agency vital signs data set, approving and identifying any required updates to multi-agency procedures, implementing action arising from safeguarding practice reviews, alongside receiving reports from services on single agency quality assurance activity.

Core membership, with any additional representatives co-opted as required:

<b>Organisation / Sector</b>	<b>SEG Member</b>
<b>Wakefield Safeguarding Children Partnership Business Unit</b>	<ul style="list-style-type: none"> <li>• Independent Scrutineer</li> <li>• Business Unit Manager</li> <li>• Quality, Policy and Development Officer</li> <li>• Project Support Officer</li> </ul>
<b>Wakefield Metropolitan District Council</b>	<ul style="list-style-type: none"> <li>• Head of Service for Localities, Integrated Front Door and Targeted Early Help</li> <li>• Head of Service for Early Intervention and Prevention</li> <li>• Head of Service for Safeguarding, Quality and Learning Service Manager for Youth Justice</li> <li>• Service Manager for Children’s Public Health</li> <li>• Service Manager for Business Intelligence and Governance</li> </ul>
<b>West Yorkshire Police</b>	<ul style="list-style-type: none"> <li>• Detective Inspector for Safeguarding</li> </ul>
<b>NHS West Yorkshire Integrated Care Board</b>	<ul style="list-style-type: none"> <li>• Designated Nurse for Safeguarding Children and Children in Care</li> </ul>
<b>South West Yorkshire Partnership Foundation Trust</b>	<ul style="list-style-type: none"> <li>• Named Nurse for Safeguarding</li> </ul>
<b>Mid Yorkshire Teaching Trust</b>	<ul style="list-style-type: none"> <li>• Named Nurse for Safeguarding</li> </ul>
<b>Harrogate and District NHS Foundation Trust</b>	<ul style="list-style-type: none"> <li>• Named Nurse for Safeguarding</li> </ul>

<b>Spectrum</b>	<ul style="list-style-type: none"> <li>• Specialist Nurse for Safeguarding and Prevent Lead</li> </ul>
<b>School Representative</b>	<ul style="list-style-type: none"> <li>• Designated Safeguarding Lead</li> </ul>
<b>Turning Point</b>	<ul style="list-style-type: none"> <li>• Operations Manager</li> </ul>
<b>Probation</b>	<ul style="list-style-type: none"> <li>• Senior Probation Officer</li> </ul>
<b>Child and Adolescent Mental Health Services</b>	<ul style="list-style-type: none"> <li>• Outreach Manager</li> </ul>
<b>WISENDSS</b>	<ul style="list-style-type: none"> <li>• Service Manager</li> </ul>

## Designated Safeguarding Lead (DSL ) Forum

---



**The DSL Forum runs every half term, online hosted by the Safeguarding Education Advisor WSCP.** It provides school and college DSLs with a regular flow of safeguarding information and updates both locally and nationally. It is free and open to all the education establishments in the district. Recordings are available for those who could not attend and wish to catch up later. Opinion forms are issued every forum for DSLs to communicate any successes and issues that they want WSCP to be aware of.

The DSL Forum directly reports into the WSCP Executive, as well as liaising closely with WSCP Sub-Groups. It is a key function in the partnership being able to have direct communication with those in the school workforce who are operationally closest to safeguarding.

# Independent Scrutineer

**WSCP has an Independent Scrutineer who provides scrutiny of the partnership's arrangements.**

---

The model to which the Independent Scrutineer role operates within is underpinned by the [Six Steps for Independent Scrutiny](#) which provides a framework which assesses the effectiveness of partnerships based on six areas:

- Safeguarding partners strategic planning and implementation
- Wider partnership engagement
- Involvement of children and families
- Effectiveness of quality assurance arrangements
- Process for undertaking and identifying learning from reviews
- Multi-agency learning and development offer

The nature of the Independent Scrutineer role comprises of:

- Four quarterly independent scrutineer reports to the Safeguarding Partnership Executive, appraising the work undertaken by the partnership, assessing the effectiveness of the Lead Safeguarding Partners and Delegated Safeguarding Partners, posing appropriate challenge, identifying further areas to strengthen and explore
- Yearly appraisal of the partnership as part of the WSCP Annual Report
- Chairing the Safeguarding Effectiveness Sub-Group
- Where required and appropriate to do so chair Rapid Reviews

The Independent Scrutineer arrangement is reviewed on an annual basis.

# Continuum of Need

## A framework to support decision making



**The Continuum of Need: A Framework to Support Decision Making has been developed to help those who work or volunteer with children and families across the Wakefield District with making decisions about how to best provide support.**

This approach is aligned to the district's Wakefield Families Together model, where a child and their family receive the right help, at the right time, from the right service, and importantly, from the right person, whilst always acting in the best interests of a child.



**The guidance sets out the type of support and which services may be needed to:**

- Keep children safe
- Support families
- Build on their strengths
- Promote resilience
- Improve overall outcomes for children and their families

The Continuum of Need also sets out the arrangements and principles to which services share information and data with each other to safeguard children and promote their wellbeing. The Continuum of Need can be accessed from:

[www.wakefieldscp.org.uk/professionals/procedures/](http://www.wakefieldscp.org.uk/professionals/procedures/)

The Continuum of Need should be used by those who work or volunteer with children and families to aid decision making and identify next steps, but not replace the conversations when concerns about a child are raised.

The Continuum of Need sits alongside and is complimentary to WSCP Procedures which can be found at

[www.wakefieldscp.org.uk/professionals/procedures/](http://www.wakefieldscp.org.uk/professionals/procedures/). WSCP is part of the [West Yorkshire Consortium Inter Agency Safeguarding and Child Protection Procedures](#), which includes multi-agency guidance in respect of service disputes and escalation.

# How WSCP is Funded

---

**WSCP is funded by the three safeguarding partners: Wakefield Metropolitan District Council, NHS West Yorkshire Integrated Care Board and West Yorkshire Police, below is the current breakdown of contributions:**



- Wakefield Metropolitan District Council – £142,137
- NHS West Yorkshire Integrated Care Board – £142,137
- West Yorkshire Police – £20,300

# Relevant Agencies

---

Relevant agencies are those services whose involvement within WSCP, alongside the safeguarding partners: Wakefield Metropolitan District Council, NHS West Yorkshire Integrated Care Board and West Yorkshire Police is required to safeguard and promote the welfare of children. Those agencies have been identified, but not exclusively so, are listed below:

## Education & Early Years



- All education settings
- All early years and childcare settings

## Health



- Harrogate and District NHS Foundation Trust
- Spectrum Community Health CIC
- Primary Health Care
- Mid Yorkshire Teaching Trust
- Turning Point
- Compass
- South West Yorkshire Partnership Foundation Trust
- West Yorkshire Sexual Abuse Referral Centre
- Social Care Providers
- Commissioned Health Providers

## Criminal Justice



- CAFCASS
- National Probation Service
- HMP Wakefield
- HMP Newhall

## Voluntary and Community Sector Enterprise



- Young Lives Consortium
- NOVA
- Yorkshire Sport Foundation
- Other Voluntary and Community Sector Enterprise organisations, including those which are commissioned by discussion and representation

## Local Government



- Department for Work and Pensions (JCP)
- Youth Justice Board
- Wakefield Metropolitan District Council  
Lead Member for Children and Young People's Services
- West Yorkshire Combined Authority

## Housing



- Wakefield District Housing
- Residential Homes for Children

## Additional Public Services



- British Transport Police
- West Yorkshire Fire Service

## Wider Partnership Engagement Groups



- Build Our Futures
- Faith Groups
- Lay members
- Any provider of services and activities for children

# Contact Us

**Email:** [wscp@wakefield.gov.uk](mailto:wscp@wakefield.gov.uk)

**Address:** Wakefield Safeguarding Children Partnership, Burton Street,  
Wakefield, WF1 2EB

**Phone:** 01924 306497

**Website:** [www.wakefieldscp.org.uk](http://www.wakefieldscp.org.uk)