

Wakefield
**Safeguarding Children
Partnership**



Annual Report
September 2019 - August 2020

Table of Contents

Foreword	3
Introduction	5
Wakefield Context	6
Independent Scrutiny, Assurance, Learning & Improvement	7
Chapter I: Scrutiny & Assurance	9
1. Overview	9
2. Scrutiny & Assurance: Child Death Overview Panel	10
3. Scrutiny & Assurance: Section 11 Audit	16
4. Scrutiny & Assurance: Multi-Agency Case Audit	18
5. Scrutiny & Assurance: Safeguarding Effectiveness Group	20
6. Scrutiny & Assurance: Safeguarding Practice Review Challenge Events	20
7. Scrutiny & Assurance: Multi-Agency Child Exploitation (MACE)	21
Chapter II: Learning & Improvement	22
1. Overview	22
2. Learning & Improvement: Rapid Reviews and Child Safeguarding Practice Reviews	22
3. Learning & Improvement: Multi-agency Safeguarding Training & e-Learning	23
4. Learning & Improvement: Safeguarding Advisor for Education	28
5. Learning & Improvement: Procedures, Resources, Guidance and Toolkits	29
6. Learning & Improvement: Communication	31
7. Impact of WSCP during Covid-19	32
8. Future Areas for WSCP to Consider	36
Appendix 1 – WSCP Structure	37
Appendix 2 – Relevant Agencies	38

Foreword

It is my pleasure to introduce the first annual report of the Wakefield Safeguarding Children Partnership (WSCP) under the new multi-agency safeguarding arrangements as set out in the statutory guidance, Working Together to Safeguarding Children, 2018 (WTSC, 2018).

In Wakefield the new arrangements were operationally effective from September 1st 2019. These new arrangements include the need for Independent Scrutiny and I have fulfilled that role from the outset.

Obviously, no one involved quite expected the year we have experienced. From my independent perspective I have witnessed WSCP being drawn even more closely together in many areas and adopting and adapting practices to cater for remote working and the various other restrictions that those working with children have experienced since March. Throughout this period the additional vigilance, communication and awareness raising in respect of children who may be made more vulnerable during the various lockdown restrictions we have experienced has been evident.

The partnership have provided regular and detailed updates to the ways in which agency activities and delivery of services has altered, the Wakefield partnership's approach to these issues has been well received and been adopted by others in the region as an example of good practice. In some areas, particularly the approach to learning and development we have found that some of the adaptations to our normal routine have proven to be more successful than our normal approach. For instance, the partnership has held remote

training sessions and the Safeguarding Week Conference continued very successfully despite the need for remote working. It is quite clear that for some learning and awareness raising remote technology has enabled a much wider audience than the traditional travel to the 'classroom' venue for the session. I am sure we will learn from this year and incorporate travel free remote access to many important sessions in the future. It is clear that this is less disruptive for some key staff and enables them to participate even within the context of their pressured timetable. It is possible that this approach might also be more suitable for some professionals to participate in statutory meetings too and partners will need to consider this into the future.

During this first year I have provided four reports to the Safeguarding Partnership Executive as planned. I have attended and observed strong commitment from partners at all of the sub-groups that form the partnership structure and operational arrangements. The partnership has maintained its focus across its 5 priority areas as detailed in this report.

There are a number of statutory requirements of the partnership and these include effective multi agency challenge via the review of serious cases. I am able to report that the partnership has undertaken appropriate reviews and produced relevant recommendations specific to agencies in relation to their practice. I have also witnessed the subsequent follow up activity ensuring that these recommendations have been implemented across staff teams etc. In addition, multi-agency case file audits and the Section 11 audit process have been completed during the year.

The Partnership has worked hard to develop its core data set, this is an essential set of data, the analysis of which provides focus and direction to the most vulnerable children and families, where safeguarding is of most importance. This data and the subsequent process presents a continuing challenge for the partnership and will remain a priority into the forthcoming year.

The National Review Panel has published this year an overview report after considering a series of serious cases of criminal exploitation. The recommendations arising from this national review have been widely circulated in Wakefield and the importance of identifying the young people most vulnerable to this type of exploitation has been reinforced with partnership members. I know that schools, Academies and colleges in Wakefield are particularly aware of the correlation between this type of exploitation and those excluded or missing from education as a result of these recommendations. In a similar area of concern, I have pressed Police colleagues to provide data relating to their work to disrupt and prevent perpetrators of child exploitation. Recently this data has been comprehensively provided to the core data set and is again an example of best practice.

During the year I have observed new voluntary organisations welcomed into the Partnership adding to the overall Safeguarding capacity. Parents Against Child Exploitation (PACE) and St Giles Trust are examples of this.

As a district Wakefield is working hard to develop approaches to early help and prevention, Wakefield is ranked No1 in the region for its 'Troubled Families' successful outcomes. Partners are increasingly collaborating to Team

around the Child/family arrangements and close links between social care agencies and schools are continuing to develop in the prevention arena. I am optimistic that the partnership can promote these arrangements significantly during 20/21.

Finally, I would like to thank all of the staff and volunteers of the many different agencies that have allowed me access to their data and meetings as observer and occasionally contributor too! The partnership has been open to positive observations, challenge and constructive criticism equally making effective scrutiny possible.



Stuart Smith OBE

Independent Scrutineer and Children's Services Improvement Advisor

Introduction

WSCP was established in September 2019, following the Sir Alan Wood National Review and the revised WTSC 2018. The legalisation stood down Wakefield Safeguarding Children Board (WSCB) and this report reflects a year of transition from WSCB to WSCP.

The new multi-agency safeguarding arrangements changed significantly in relation to governance which saw the replacement of the board function with a streamlined executive, and the appointment of an Independent Scrutineer who provides challenge and holds the partnership to account.

The changes offered opportunity to build on the strong system working in Wakefield, to adopt new approaches and ensure culture of learning and development is embedded. The structure of WSCP can be viewed within appendix 1.

Three statutory partners (from the Local Authority, Police, Wakefield Clinical Commissioning Group) alongside the Independent Scrutineer, Stuart Smith work in partnership with all relevant agencies (see appendix 2), with children and young people and with local communities to promote the welfare of all Wakefield children and to ensure they are effectively safeguarded.

In 2019, WSCP developed principles and aims to locally implement WTSC 2018. The following principles have guided WSCP through this transition:

- Maintain a high quality of safeguarding across the district
- Develop an effective form of independent scrutiny
- Creatively engage with and seek the voice of young people
- Creatively engage with the wider community
- Ensure that all relevant agencies continue to be involved in WSCP activities
- Develop regional activity where they are consistent with our vision

The executive drives the business of WSCP and promotes ownership from the statutory partners. Joining the statutory partners to form the executive is primary, secondary and special educational needs school representation along with the Director of Public Health. The statutory partners are accountable, open to challenge and have worked with the Independent Scrutineer to robustly and independently examine the function and delivery of WSCP, its sub-groups and work streams. The role of the Independent Scrutineer has ensured that multi-agency safeguarding arrangements are fit for purpose, are consistent with WTSC 2018 and that learning, evidence, research and community engagement inform policy and practice.

Wakefield Context

Wakefield District covers 350 km² and is one of 5 local authorities that make up the West Yorkshire region. The district is made up of a number of towns and villages, located on the outskirts of the City of Wakefield. The district is well served by transport links, being located on 2 major motorways (M62 and M1). It borders Leeds to the North East, Barnsley and Doncaster to the South and Kirklees to the West.

In 2019, 345,000 people lived in the Wakefield local authority area making this the 20th largest local authority area in England.

The latest figures for 2019 show that there were 79,500 children and young people aged 0-19 in Wakefield representing 23% of the total population with 51% being male and 49% being female. The percentage of children and young people has grown by 3.5% in the last 4 years.

Wakefield's population is becoming increasingly ethnically diverse with 15% of school aged children now being from black and minority ethnic communities. The non-white British populations most heavily represented in the district are white non British (likely European migrants in the main) and Asian Pakistani.

The Index of Multiple Deprivation (IMD) 2015 placed Wakefield as the 65th most deprived district in England (out of 326 Districts). Comparing the IMD for 2015 and 2019 Wakefield has become (relative with other local authorities) more deprived; Wakefield is the 54th most deprived district in England (out of 317 districts, 7th out of Yorkshire and Humber) and 54,200 people are living in neighbourhoods amongst the top 10% most deprived in England.

The deprivation profile is most shaped by high levels of education and skills deprivation and high levels of crime deprivation.



Beate Wagner

Director of CYPS

Wakefield Metropolitan District Council



Mark McManus

Chief Superintendent

West Yorkshire Police



Suzannah Cookson

Chief Nurse

Wakefield CCG

Independent Scrutiny, Assurance, Learning and Improvement

Governance: Funding, Resource and Alignment

The three statutory partners direct WSCP through a Safeguarding Partnership Executive (SPE) which meets bi monthly although the meetings have taken place every three weeks since March 2020 and the beginning of the Covid -19 pandemic. Attendance at SPE comprises of the three statutory partners and head teacher representatives from the schools sector, special schools, primary schools and secondary schools, alongside key senior leads from Health and the Local Authority.

The primary role of SPE is to set the strategic priorities across the partnership. Strategic direction is informed through reporting from the Sub Group Chairs via the Safeguarding Children Partnership Manager, an understanding of quality and performance and key drivers and challenges for Wakefield informed by focussed attention to areas of practice.

The group agrees the annual report and implements the Senior Leadership Visiting Programme across the partnership.

The SPE receives quarterly reports from the Independent Scrutineer of the effectiveness of WSCP in safeguarding and promoting the welfare of children.

WSCP aligns itself and influences the strategies and priorities from other strategic partnerships such as:

- the Safeguarding Adult Board (which is jointly staffed by the same Secretariat)
- the Community Safety Partnership
- the Health and Wellbeing Board
- the Domestic Abuse Strategic Group

The Strategic Priorities have been identified from the Ofsted Children's Services Focused visit February 2018, the Ofsted Inspection of Children's Services June 2018, the Improving Wakefield Services for Children Plan July 2018 and practice issues recognised through recent national and local Child Safeguarding Practice Reviews. The voice of the child in understanding, identifying problems and developing services is integral in successfully meeting all of the priorities detailed below:

- Ensure that thresholds across the partnership are fully understood so children receive the right help at the right time
- Improve WSCP's effectiveness in reducing the harm to children in vulnerable groups, with particular focus on children and young people at risk of sexual or criminal exploitation.
- Improve WSCP's effectiveness in reducing the harm and protecting children and adolescents who are experiencing neglect.
- Improve WSCP's effectiveness in reducing the harm and protecting children experiencing problems with emotional health and wellbeing.
- Review and evaluate the effectiveness of the partnership to safeguard and promote the welfare of children and young people in the Wakefield District, and respond to any areas for change and development through the transition to the new arrangements.

A county-wide work stream led by West Yorkshire Police has been key in progressing the transformation from Safeguarding Children Boards to Multi Agency Safeguarding Arrangements across the county. The Independent Scrutineer and Safeguarding Children Partnership Manager have led the Wakefield involvement with the cooperation from the 3 statutory partners.

Significantly, several functions of the partnerships across West Yorkshire have been unified across the county, to rationalise resource and simplify processes for partners. This has included a uniformed approach to Rapid Reviews, the ongoing development of a single portal and joint process for Section 11 / Safeguarding Adults Audit and identified leads for each county-wide work stream (Child Death Overview Panel, communications, Risk and Vulnerability, regional trainer's network and procedures).

The partnership employs various methods to drive improvement and seek assurance children are safeguarded in Wakefield effectively. The following sections provide detail about the approaches employed, the functionality of WSCP and how WSCP has steered multi-agency system and practice development.

WSCP work streams are split in this report, into two chapters covering 'Scrutiny and Assurance' and 'Learning and Improvement' as follows:

Scrutiny and Assurance:

1. Overview
2. Child Death Overview Panel
3. Section 11 Audit
4. Multi-Agency Case Audit
5. Safeguarding Effectiveness Group
6. Safeguarding Practice Review Challenge Events
7. Multi-Agency Child Exploitation (MACE) Group

Learning and Improvement:

1. Overview
2. Rapid Reviews and Child Safeguarding Practice Reviews
3. Multi Agency Training and e-Learning
4. Safeguarding Advisor for Education
5. Procedures, Resources, Guidance and Toolkits
6. Communication
7. Impact of WSCP during Covid -19
8. Future Areas for WSCP to Consider

Chapter 1:

Scrutiny and Assurance

1. Overview

WSCP arrangements explain how joint working arrangements are monitored and measured in Wakefield to assess whether they are working effectively to keep children safe. This approach is used to independently scrutinise multi-agency safeguarding arrangements to:

- highlight areas of good practice;
- highlight areas which require improvement;
- examine how effective arrangements are for practitioners;
- decide what we need to examine in more detail;
- determine what difference WSCP has made to outcomes for children and to practice;
- support and challenge partners to improve practice and;
- inform standards and agreements for joint working

Wakefield Safeguarding Children Partnership Independent Scrutiny and Assurance Framework

Quantitative Data

(Multi-agency and single-agency performance management)

Learning and Improvement

Quantitative Evidence

(Multi-agency audits, independent scrutiny, CSPRs, Section 11)

Engagement with Front Line Staff

(The views of practitioners, line managers and safeguarding leads)

Chapter 1: Scrutiny and Assurance

2. Scrutiny and Assurance: Child Death Overview Panel

The Child Death Overview Panel (CDOP) has continued to meet regularly to review all deaths of children in Wakefield. The Panel itself has undergone transformation from a solely Wakefield panel to also include North Kirklees on the Mid Yorkshire Local Authority Footprint. The Wakefield cases have continued to be considered by the multi-agency panel and serviced by a Child Death Review Coordinator. This focus and thoroughness has resulted in learning for individual agencies and systems as a whole where modifiable factors have been identified.

What has happened during this year?

- 3 CDOPs took place in Wakefield. 2 joint panels were undertaken with Kirklees and 1 panel was held in isolation to discuss Wakefield cases, a total of 14 cases were considered and completed. 1 panel was scheduled to take place in April but was cancelled due to Covid -19.
- New national data collection forms and appendices were published that required considerably variable different and additional information requests. This development enables National Child Mortality Database to report directly to the Department of Health to identify national trends.
- eCDOP has now been adopted in Wakefield, this measure now ensures that all 3 joint CDOP partners are using a consistent database and processes.



Total number of deaths notified and reviewed for Wakefield District

Notifications

- Wakefield CDOP were notified of 20 deaths occurring between 1 April 2019 and 31 March 2020
- Of those notified 13 were under 1 year of age, 5 being 0 - 27 days and 8 being 28 - 364 days
- The remaining 7 were aged 1 - 18 (Due to the wide distributions within the ages for the basis of this report a detailed age breakdown cannot be provided to order to uphold anonymity)

Age	Number
0 - 27 days	5
28 days - 364 days	8
1 - 4 years	*
5 - 9 years	*
10 -14 years	*
15 -17 years	*

NB It is important to note not all cases that are notified are discussed in the same year a death has occurred. This can be for a number of reasons, such as investigations and inquiries in relation to the circumstances of the death. As a result, these processes need to reach completion before CDOP is completed.

Reviews carried out

During 1 April 2019 and 31 March 2020 14 cases discussed at CDOP panel.

Comparatively to previous years there were no significant pattern regarding the gender of children discussed at panel:

Gender breakdown of cases discussed at CDOP panel during 2019 - 2020	
Male	9
Female	5

Modifiable factors

- Modifiable factors occur where it is possible to identify a factor that may be linked to the infant/child/young person death
- 50% of cases reviewed had identified modifiable factors of these the majority were under 1 year (both 0 -27 days and 28 days - 364 days) and aged 15 -17 years

Some modifiable factors identified this year included:

- Intrinsic to the child
 - Alcohol abuse, child's age, child's emotional health and well-being
- Intrinsic to social environment
 - Co-sleeping, alcohol/substance misuse by a parent/carer, smoking by the parent/carer in household, Housing, domestic violence, parenting/supervision, Child abuse/neglect
- Intrinsic to physical environment
 - Domestic abuse, parenting/supervision, child abuse/neglect
- Intrinsic in relation to service provision
 - Difficulty in engagement

Of the 14 cases discussed 12 were identified as being white British, the remaining two did not have an identified ethnicity recorded.

What were the main causes of death?

There are two categories for recorded deaths; expected and unexpected. Expected deaths may include cases where there was a pre-existing medical condition which lead to a death. Unexpected deaths are where something happened which could not have been predicted or expected for example, a car accident or Sudden Infant Death:

Expected / Unexpected deaths	
Expected deaths	8
Unexpected deaths	6
Not recorded whether expected/unexpected	0
Total	14

Causes of death

Of the deaths reviewed this year, they covered deaths that had occurred 2017-18, 2018-19 and 2019-20 the top three categories of deaths were;

- 1/ Perinatal/neonatal event (an event around the time of birth and up to 28 days afterwards)
- 2/ Chromosomal, genetic and congenital anomalies (conditions which are inherited or are present at birth)
- 3/ Suicide or deliberate self-inflicted harm

Could anything have been done differently?

CDOP considered all the factors in a child's life to see if any action could have been taken to prevent death. Only a very small number of child deaths each year are considered preventable, and within each case there are often a range of factors to consider. Due to the small numbers involved the data has been grouped together over a five year period.

Lifestyle factors

Maternal and parental smoking, alcohol consumption were identified as contributing factors. Maternal smoking has previously been a particular issue in Wakefield. During 2019-20 it did appear less common in the cases discussed this year. Co-ordinated actions have taken place in the promoting prevention of smoking are continuing to ensure progress regarding smoking prevention and the positive benefits for children and family.

What have CDOP undertaken to in relation to these factors?

Unsafe sleeping practices

There were a high number of notifications of child deaths related to unsafe sleeping / co-sleeping practices that occurred during 2019-2020 more than a normal year. A small number of referred deaths were associated with co-sleeping and other risky sleeping practices such as sharing an unsafe surface with a child, after consuming alcohol.

Bradford District Care NHS Foundation Trust 0-19 services use Lullaby Trust information promoting safe sleeping, safe sleeping advice is also available for mothers-to-be when accessing Mid Yorkshire Hospital NHS Trust Midwifery portal.

Due to the higher numbers of referred deaths this year associated with co-sleeping or unsafe sleeping practices a multidisciplinary task and finish group with representation from all organisations has been established to look at training all professionals involved in the care of families and babies.

Due to Covid -19 this training will be online delivered by the Lullaby Trust and funded by Public Health. In addition to the training, the group are looking at consistent ongoing messages being given and resources to support this work.

Bereavement support

Wakefield Mental Health Alliance has commissioned Wakefield Star Bereavement service to support children and young people who have been bereaved. This service will support children and young people bereaved through the loss of siblings or adults.

Mental Health Provider Alliance, based with Young Lives Consortium and working closely with Star Bereavement. The Postvention Practitioner will specifically support families, friends, and communities where a young person under 25 has taken or suspected to have taken their own life.

CDOP have continued to work with partners such as the police and local hospices to ensure that the panel's knowledge is up to date on areas like sudden infant death and bereavement services. For example Martin House Hospice currently offer some support, while there is specific support for newly bereaved mothers provided by bereavement midwives.



Recommendations for future actions

1. Continue to work with partners to reduce the underlying risk factors for neonatal deaths mainly maternal/ parental smoking
2. Maintaining awareness of the need to be highly vigilant for any deaths that have any possible Covid -19 links; and if any, they are immediately notified to CDOP to enable the speedy notification of the National Child Mortality Database and the Department of Health
3. eCDOP was adopted in July 2020, this will need introduction and training for panel members and agencies that supply information, including expanding agencies where requests will be sent
4. Continue using the National Child Mortality Database and complete all cases currently held on this system
5. Development of Child Death Review Meetings to occur prior to the CDOP process meeting

This year's Section 11 Audit took place in July 2020 and overall there was a good response received from services who work with children in Wakefield.

A total of 12 completed audit tools were received by:

Wakefield Children and Young People's Service	NHS Wakefield CCG
South West Yorkshire Partnership Trust	West Yorkshire Police
Mid Yorkshire Hospital Trust	Wakefield Youth Offending Team
National Probation Service	Barnardo's
Spectrum	Bradford District Care Foundation Trust
Wakefield	British Transport Police

It is noted that 5 agencies did not return a completed self-assessment tool. WSCP acknowledges agencies were requested to carry out this audit during Covid -19 and as a result this had an impact on the ability for service's to respond within the timeframe.

Services completed a self-assessment tool in relation to their respective safeguarding arrangements covering:

- Leadership and management
- Reflections and accountability
- Policies, procedures and systems
- Induction, training and support
- Safer recruitment and allegation management
- Multi-agency working
- Recording, storing and sharing information
- Person centred approach
- Engagement with WSCP

Generally services reported strong compliance across their self-assessment tool:

- Senior managers expressed a strong commitment to safeguarding through agency strategic plans, policies and procedures. Roles and responsibilities are also reportedly well-defined and developed. Staff have an understanding of their role in safeguarding and have access to support them in their roles.
- Areas such as training and safer recruitment were recognised by partners as key arrangements and these are in place across the service area.
- All agencies which are providing services to children noted they were engaged in assessment processes and generally all agencies reported as having arrangements to listen to and act upon the views of children.
- A persistent area for development identified across recent national and local Safeguarding Practice Reviews has been in relation to information sharing between agencies. Whilst generally good compliance was reported agencies recognised the requirement for partnership wide information sharing agreement to further increase effectiveness.
- Agencies identified specific areas for development for their service which included:
 - Ensuring training needs are met by staff undertaking WSCP training to gain local understanding of safeguarding procedure and practice in Wakefield
 - Clearer access to safer recruitment training

- Ensuring local safeguarding policy reflects up to date national legislation
- Ensuring Wakefield Families Together is embedded
- Transitional provision arrangements for children entering adulthood

Overall WSCP can take assurance that agencies are aware of their duties under Section 11 and have continued to improve upon their arrangements since the 2017 audit. However the absence of a challenge event needs to be addressed by the partnership as it poses a question as to the level WSCP can be assured of agencies safeguarding arrangements based on the completion of a self-assessment as a standalone exercise for this audit.

The development of Section 11 process will continue to be further considered by WSCP. West Yorkshire Safeguarding Partnerships and Safeguarding Adult Boards are currently discussing whether one online system can be adopted across the region using the Wakefield approach to a joint child and adult self-assessment tool to further reduce the requirement for partners to complete multiple audits and improve consistency across the county.

WSCP seeks to assure itself that partnership work to safeguard children is of good quality, keeps children happy, healthy, achieving and safe; improves outcomes and makes a difference; and is carried out by well-informed skilled practitioners who are properly supported by line managers, organisations and the wider partnership arrangements. Multi-Agency Case Audits (MACAs) is one approach WSCP uses to carry out this assurance. The audits ensure WSCP has a view across a child's journey, but with a focus on the effectiveness of safeguarding arrangements.

During the year under review, September 2019 to August 2020 two MACAs were undertaken on Mental Health and Neglect.

The Quarter 3 Audit, October to December 2019 was based upon the JTAI audit theme of 'children's mental health, children who are living with mental ill health and in receipt of services'. The audit considered six cases which met the criteria in the JTAI guidance.

The following strengths were identified in the multi-agency work:

- School records demonstrated a clear involvement in multi-agency planning, a clear understanding of the plan and the role of the staff within school settings was clearly understood.
- All children who were attending school had an identified lead practitioner within the school setting who was co-ordinating the response to the plan within the school and all children had an identified adult within the school setting to whom they could go to for support.
- Effective partnership work was leading to significantly improved outcomes for the children.

- Children in care had an identified advocate from the Barnardo's CAPS Service; however, this did not extend to advocacy with CAMHS which would be beneficial.
- As part of this audit a Practitioner event took place involving the practitioners who were working with the children whose situations had been considered. The practitioners who attended the event were skilful, committed and demonstrated real passion for the child they were supporting.

The following areas for development were noted:

- Some key professionals were not routinely involved in the assessment and planning for children. This in particular resulted in gaps in key information and some professionals who were regularly seeing children were not regularly and routinely updated about CAMHS involvement, planning, and progress of therapy, this was particularly of note in one case where the GP was regularly seeing the child.
- Routine contact with School Nursing Services (BDCFT) as part of a Section 47 investigation was not always apparent although it was noted that health information had been shared as part of the strategy discussion.
- Transition arrangements to Adult services for young people who have ongoing mental health support needs were not clear.

JTAI theme of children at risk of Neglect.

The JTAI programme examined the multi-agency response to older children who are experiencing neglect and published its report 'Growing Up Neglected' in July 2018.

The same methodology as the previous audit was followed and a sample group of children and young people who fall within the scope of the guidance were identified and audits were requested from across the partnership.

- The findings from the audit were similar to the previous audit with it noting that in some cases there was an absence or contact or involvement with some key professionals.

Learning from audit continues to be a key method of seeking assurance in relation to multi-agency practice to safeguard children in Wakefield. The learning and findings from the audits are shared across the partnership and actions taken forward by the Safeguarding Effectiveness and Learning and Development sub-groups.



Safeguarding Effectiveness Group

The Safeguarding Effectiveness Group (SEG) has met regularly throughout the year and has led on the multi-agency audits, the analysis of performance data across the partnership and the updating of policy and procedures across the partnership.

The opportunity for the partnership to refine its data set has been considered over the year with advice from the Independent Scrutineer implemented. A revised approach to data collation and analysis has been agreed which allows for a deeper understanding across the partnership of key areas.

SEG has led the thematic approach to assurance activity with deep dive areas considering children vulnerable to exploitation, children experiencing neglect and children experiencing mental ill health. The deep dive approach has included senior leadership visits to front line areas of practice, quality assurance audit activity and a consideration of performance data relating to the area of practice to provide a holistic picture of the quality of practice and journey of a child.

The approach is informed by local and national emerging issues and focuses on areas which have been identified as requiring further development or emerging areas of multi-agency safeguarding practice. Holistic self-assessment through data analysis, multi-agency audit, and observation of practice, feedback from service users and practitioners and comparator intelligence provides an accurate account to assess interventions effectiveness in Wakefield. The reports derived from in-depth reviews provide assurance and identify areas for further development.

6. Scrutiny and Assurance: Safeguarding Practice Review Challenge Events

In January and February 2020 a series of challenge events took place following the completion of previous national and local Safeguarding Practice Reviews. Two panels consulted with a number of professionals from across the partnership to seek assurance appropriate actions had been taken in implementing learning identified within the respective reviews. The panels reported to the SPE and Child Safeguarding Practice Review Group to provide feedback on the progress of the implementation of learning and completion of outstanding action plans.

This year has seen the merging of the Multi-Agency Child Exploitation (MACE) group and Risk and Vulnerability Group, across the partnership we have reviewed and refreshed the membership quorum and terms of reference providing renewed focus around partnership objectives. This work increased representation across all sectors and welcomed new organisations and areas to this structure. This group have led change across the partnership, improving flagging of vulnerable children within all organisations to ensure more cohesive and effective information exchange and allow earlier identification and intervention when risks are apparent. The partnerships first children vulnerable to exploitation problem profile has been developed, utilising a range of data sources we have identified key areas to practically focus partnership resources. The bus station was identified as a risk area, youth services and joint working was commissioned through the MACE and provided targeted interventions in line with partnership needs.

The co-location of police and local authority services continues to positively impact on the service provision for children vulnerable to exploitation. The partnership have established risk assessment meetings which are victim focused. A range of partners meet to share information and agree appropriate interventions with young people at risk seeking to reduce this risk. This has proved successful and continues to develop. The district has also established a perpetrator risk assessment meeting, this is seeking to share information and develop tactics to disrupt and convict those who are seeking to exploit children within the district.

New performance frameworks are in place and helping us to monitor impact.

The partnership have identified that children who are missing increase their risk of exploitation and harm, the district has worked hard to understand these issues and seek to implement appropriate interventions. This has seen the Police identify repeat missing people and working with partners to intervene and prevent missing occurrences. Hotspot locations have been identified and police and partners are working to address specific issues. Collectively this has seen a reduction in missing people in Wakefield by 60%.

The partnership is aware of future challenges around risks to young people through online crime as young people spend more time online through Covid -19 restrictions. A focus this year has been around Children who are not educated within a school setting and ensuring that interventions and support is appropriate to their needs. Moving forwards we will continue to utilise the problem profile to identify and address issues as they arise.

Chapter 2: Learning and Improvement

1. Overview

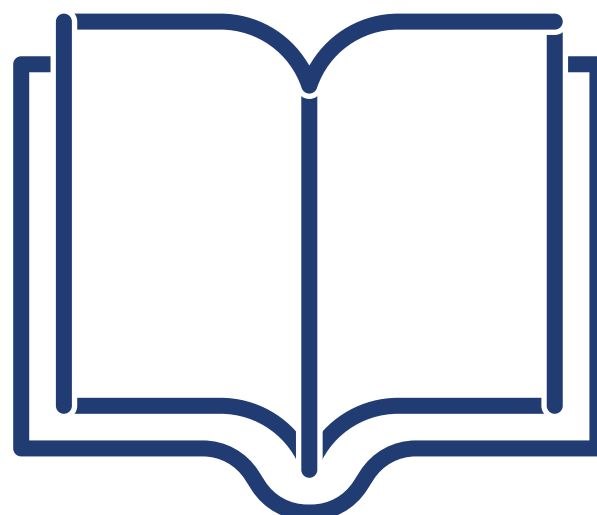
WTSC 2018 states services should ensure that staff are supported and undertake safeguarding training in particular to identify children and families who would benefit from early help.

WSCP utilises learning from previous multi-agency safeguarding children training; learning and action plans from national and local Child Safeguarding Practice Reviews; CDOP; Section 11 and multi-agency audit; new and amended legislation/policy/practice/guidance; feedback from practitioners and managers; training needs analysis findings (2019); further review of the traditional training offer and consideration of the alternative approach to learning and development.

2. Learning and Improvement: Rapid Reviews and Child Safeguarding Practice Reviews

WTSC 2018 guidance revised the terminology from Serious Case Reviews (SCR) to Child Safeguarding Practice Reviews (CSPR). The partnership has developed a CSPR Group Terms of Reference and updated arrangements in line with national legislation to support and facilitate Rapid Reviews and the completion of CSPR as required.

WSCP has completed five Rapid Reviews during the year resulting in two CSPR which are ongoing. WSCP has ensured that for each Rapid Review and the ongoing CSPR that the learning from the reflection and consideration of the circumstances that lead to the serious incident have been shared across the partnership and contributed to the development of learning through written briefings to professionals working with children in Wakefield and through multi agency training sessions.



3. Learning and Improvement: Multi-agency Safeguarding Training and e-Learning

Multi-Agency Training 2019/20

WSCP aims to make a difference in the lives of children and continue to promote the message that ‘Safeguarding is Everyone’s Business’. This crucial message is given throughout the delivery of all multi-agency training and conferences arranged and coordinated by WSCP.

WSCP have provided training for professionals and volunteers from the public, voluntary and community sector. In 2019/20 the training brochure which included 84 training courses and briefings covering a range of topics, 9 courses were cancelled during the period mostly in March due to Covid -19. WSCP included a number of new courses for 2019/20:

- Mental Health First Aid
- Reducing Parental Conflict
- Reducing Parental Conflict - Training for Trainers
- Restorative Practice
- Introduction to Safeguarding Supervision
- County Lines
- Drifting into Cyber Crime
- YGAM - Digital Resilience in Gambling and Social Gaming
- Technology and Children - Potential Issues Affecting Young People Online
- Pornography Impact, Research and Resources

WSCP courses are updated regularly to ensure the content reflects the current local and national information and statistics. A number of courses were updated in 2019, these included: Neglect Including an introduction to the Wakefield Toolkit; Compromised Parenting including an introduction to Adverse Childhood Experiences (ACE’s); Disguised Compliance and The Role of Professional Curiosity. In 2019 WSCP also advertised a range of training courses about Children and Young People’s Mental Health which were delivered by Future in Minds practitioners from CAMHS. WSCP training courses were delivered to 1711 practitioners from across statutory and voluntary services, between 1/4/19 - 31/3/20; this is a substantial increase on the previous year.

Due to the pandemic, WSCP had to consider how training could be delivered virtually and what other support and guidance could be provided. WSCP were aware children were less visible to services and to the community, there was a need to ensure that safeguarding children was at the forefront of everyone’s mind and the partnership continued to raise awareness of the issues affecting children. With this in mind WSCP renewed the contract with Virtual College and extended the number of e-learning licences from 2000, to 5000. The partnership also added courses and utilised Virtual College’s updated courses.

WSCP's Safeguarding Campaign was launched in April 2020 to raise awareness of child safeguarding and neglect, encourage the reporting of concerns and to build a sense of social responsibility in the public around safeguarding.

A campaign was produced, this included posters, leaflets and social media graphics. The target audience was workers coming into contact with families during lockdown i.e. community volunteers, supermarket workers, delivery drivers, mail officers etc. whilst those who typically work with children were not seeing children as frequently.

There were three key messages:

- **Ownership - everyone seeing safeguarding as part of their community responsibility**
- **Spotting - understanding the increased potential for harm and understanding the signs**
- **Reporting - encouraging people to act when they have a concern**

The campaign promoted the MASH telephone number as well as directing traffic to WSCP website.



The Campaign emphasised what to do if you have a concern, with the message; if it doesn't feel right or you have a concern don't ignore it - report it: Call 03458 503503.

Conferences 2019/20

WSCP had its inaugural Conference on 2nd December 2019 at the Westfield Centre in South Elmsall. It was attended by partners from across the partnership including Early Years, West Yorkshire Police, Schools, Health organisations and the Local Authority.

The event was opened by Stuart Smith, WSCP Independent Scrutineer, who set out the new Safeguarding Partnership arrangements. This was followed by a presentation about the new Practice Model Connecting Practice and the way this links to the new ways of working - Wakefield Families Together. The presentation was supported by 3 workshops which related to the three Safeguarding Partnership priorities of responding to Neglect, children and young people criminally exploited and responding to the emotional health and wellbeing of children and young people. The Conference closed with a presentation by young people who produced a video about their experiences of bullying.

In February 2020 WSCP arranged and coordinated a conference; Learning from Sienna's Story: A child who died in an adoptive placement. 80 practitioners from agencies across Wakefield attended. Speakers at the event included Peter Maddox (author of multiple CSPR in Wakefield), One Adoption Deputy Manager and an Independent Reviewing Officer.

WSCP Virtual Conference was delivered as part of Safeguarding Week in June 2020. The Conference was opened by Stuart Smith, WSCP Independent Scrutineer, who provided an overview his role and the role of WSCP during the pandemic. Chief Superintendent, Mark McManus, gave an update from West Yorkshire Police covering the role of the Police and the

new Multi-agency Perpetrator Risk Assessment Meetings, he also gave thanks to colleagues for keeping Safeguarding Children at the forefront of everyone's minds during the pandemic. This was followed by Chief Nurse from Wakefield Clinical Commissioning Group Suzannah Cookson, who talked about Partnership Working in a pandemic.

There was a keynote presentation from Clinical Researcher and Child/Adult Psychotherapist Cath Knibbs on 'Trauma Informed Practice: Child Trauma: Repl'ACE'ing the context'. Karron Zelei, WSCP Training Coordinator, provided a session on Multi-agency Safety Planning: SMART Planning. West Yorkshire Police and Crime Commissioner - Mark Burns Williams and Detective Superintendent Chris Gibson discussed Safeguarding Issues and Advice during Covid -19. The Conference had over 150 views from a wide ranging multi-agency audience.

The next WSCP Conference is 10th December 2020. Further details about this will be forthcoming in the Autumn, there will be a focus on Neglect as this has featured in two recent CSPRs.

Virtual Safeguarding Week 22 - 26 June 2020

Safeguarding Week was delivered in June 2020 virtually. Providing a wealth of workshops as well as support for practitioners to engage with. The sessions were provided by professionals from agencies across Wakefield and West Yorkshire all with extensive knowledge and experience in their subject. Additional pre-recorded resources were also made available from nationally recognised speakers on a range of topics including Contextual Safeguarding, Online Safety, Trauma and Neglect.

There were over 80 different learning opportunities offered, which included six live sessions, narrated PowerPoints, webinars, videos, podcasts, pre-recorded masterclasses and Ted Talks. The learning opportunities gave practitioners the opportunity to enhance their knowledge, skills and understanding on a variety of safeguarding topics and themes. There was strong partnership collaboration, the message publicised throughout the week was 'Safeguarding is Everyone's Business.'

The live sessions proved to be very popular with 169 practitioners attending. These were Cyber Security Awareness: Addressing Risk and Reducing Vulnerabilities; YGAM: Building Resilience around Gaming and Gambling; Drugs, what's it all about, your chance to ask awkward difficult questions that you always wanted to ask; and Challenging Stereotypes about Children in Care. The Challenging Stereotypes session was led by young people. Virtual Safeguarding Week was a huge success, which was evidenced through the incredible number of hits on the individual YouTube sessions and the increased traffic on WSCP website. The YouTube videos commissioned by WSCP generated 2020 views, There were 3 sessions which were shared across West Yorkshire these had 1588 views which totals 3608. Hits on WSCP website increased from 2,475 in June 2019 to 3302 in June 2020.



e-Learning Package

Throughout 2019/20 WSCP continued to offer an e-Learning package to practitioners in Wakefield. 10 key courses were available to partner agencies and schools provided by the Virtual College. Courses include Awareness of Child Abuse and Neglect, Awareness of Domestic Abuse, Safeguarding Children in Education, Introduction to FGM, Spirit Possession and Honour Based Violence.

During 2019/20 1,856 professionals completed 2,692 online courses accessed via WSCP website, which is a significant increase on the previous year. WSCP decided to significantly increase the number of licences from Virtual College from March 2020 to 5,000, identifying that practitioner requests for this type of training would increase due to the lack of face to face training sessions due to Covid -19. WSCP also updated the courses to the new formats from Virtual College. Courses now include in the package are; Level 1 Safeguarding Children; Level 2 Safeguarding Children; Level 3 Safeguarding Children; Safeguarding Children in; Awareness of Domestic Violence and Abuse; Child Sexual Exploitation; Suicidal Thoughts; Toxic Trio - Hidden Harm, Parental Mental Health, Parental Substance Misuse; FGM and Abuse linked to Faith or Belief; Gang related issues and County Lines; Radicalisation and Extremism; Modern Slavery and Trafficking; eSafety and LBBTQ Awareness; Parents against Child Sexual Exploitation (PACE) online awareness course; ECPAT UK Training on Child Trafficking.

During the pandemic period there were 2081 new users of Virtual College and 6,598 courses completed. This is a 145% increase in the number of courses completed during April - August 2020 than the whole of last year.

In 2019 WSCP also introduced Relationship Matters/Reducing Parental Conflict as an e-learning option which 81 practitioners have completed.

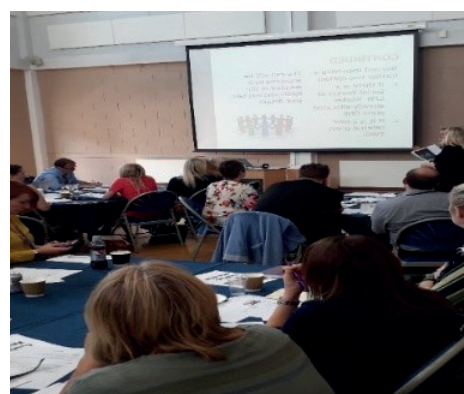


Advisor for Education

The role of the Safeguarding Advisor for Education is to support all schools and colleges in Wakefield District to safeguard their pupils. This requirement is met through a comprehensive offer of safeguarding training, the annual 175/ independent school regulations audit and provision of general advice and support. Further information is available under the Education tab on WSCP website, including policy templates.

Highlights this year include;

- A continuation of excellently evaluated training and DSL forums. Including Basic Level Refresher, Advanced Designated Safeguarding Lead (DSL), Strategic Level - Governor, Safer Working Practices, Managing Allegations against Staff, Safer Recruitment and Impact of Pornography. Over 3000 School staff were trained in the Wakefield District.
- Successful continuation of Operation Encompass to all schools in the district, including during Covid -19 lockdown. Where notifications of police attended Domestic abuse incidents are sent to schools.
- Safeguarding Advisor for Education won the directorate Excellent Employee Award 2019.
- A well-attended and evaluated WSCP Education Engagement session in July 2019.



Impact of Covid -19 and WSCP Response:

- The annual audit was cancelled due to additional pressures on schools and government guidance being updated.
- Updated temporary safeguarding policies and checklists were produced for schools in the district.
- Regular Covid -19 updates were available via the website.
- All face to face training was postponed. However DSL's and school staff were provided with read through alternatives and DSL specific top ups. Emergency advanced training was produced for schools to access in an emergency e.g. DSL staff sickness, therefore ensuring continuity of safeguarding cover in schools.
- Courses were produced virtually including updates on new guidance for schools. This, plus the wealth of other virtual training, was accessed by school staff as part of Safeguarding Week 2020.
- Safeguarding Advisor is linked into new Cluster locality meetings as part of Wakefield Families Together and is part of multi-agency audit meetings and subcommittees of the partnership.

5. Learning & Improvement: Procedures, Resources, Guidance and Toolkits

West Yorkshire Consortium Inter Agency Safeguarding and Child Protection Procedures

[Click here to view the latest changes](#)

Welcome to the West Yorkshire Consortium Inter Agency Safeguarding and Child Protection Procedures.

IF YOU ARE NEW TO THIS SITE, please see [Using the Procedures](#) for information on how to use these online procedures.

The content of this website can be accessed, printed and downloaded in an unaltered form, on a temporary basis, for personal study or reference purposes. However any content printed or downloaded may not be sold, licensed, transferred, copied or reproduced in whole or in part in any manner or in or on any media to any person without the prior written consent of tri.x and the West Yorkshire Consortium of the Bradford, Calderdale Kirklees Leeds and Wakefield Safeguarding Children Partnerships.

tri.x

Size: a a a a

[tri.x Policy](#) | [Cookie Policy](#)

West Yorkshire Multi Agency Safeguarding Procedures

The following updates have been made during the previous 12 months:

Chapter Name	Details
Initial Child Protection Conferences	Information in relation to the timescales for submitting reports to the Chair of the Child Protection Conference has been updated to reflect processes in each of the consortium areas.
Child Protection Review Conferences	Information in relation to the timescales for submitting reports to the Chair of the Child Protection has been updated to reflect processes in each of the consortium areas.
Resolving Multi Agency Professional Disagreements and Escalation	A new Section 4, Immediate / 24 hour Escalation has been added to explain the process for escalation when a professional is concerned that the situation presents a significant risk to the child and the usual escalation process of 5 days is not viable. Section 3, Process of Resolving Professional Disagreements, has been amended to allow 14 working days for the resolution of disagreements at step 6 in the process. Steps 1 -5 in the process should not exceed 5 working days.
Fabricated or Induced Illness	This guidance has been completely rewritten and added to the procedures manual. Please note - The Royal College of Paediatrics and Child Health (RCPCH) guidance 'Fabricated or Induced Illness (FI) by Carers - A Practical Guide for Paediatricians' 2009 is currently being updated. Once this review is complete the following guidance will be reviewed and updated as required in line with the revised RCPCH guidance.
Pre Birth	This guidance which provides information for practitioners on what to do if they have concerns about a pregnant woman and /or her unborn baby has been added to the procedures.
Child Abuse and Information Communication Technology	This guidance has been reviewed and refreshed as required. In the further information section, a link has been added to the Catch 22 publication Social Media as a Catalyst and Trigger for Youth Violence.
Child Abuse and Information Communication Technology	This guidance has been reviewed throughout and extensively updated.
Harmful Sexual Behaviour	This chapter has been reviewed throughout and extensively updated. Information was added with regard to Technology-assisted harmful sexual behaviour (TA-HSB) and Keeping Children Safe in Education (KCSIE) 2018. The Further Information section has been reviewed and updated. This includes the link to the Wakefield Harmful Sexual Behaviour Tool. (Updated April 2019)
Parents with Learning Disabilities	Parents with Learning Disabilities
Deprivation of Liberty online Mental Capacity Act online	These new online resources provide information on Mental Capacity and Deprivation of Liberty in relation to children and young people.

6. Learning and Improvement: Communication

Communication with wider partners

WSCP uses different methods to communicate to different audiences. From WSCP Members, wider safeguarding partners, managers and front line practitioners, to the general public, children and young people, families, parents, carers and communities groups.

The many different ways of communicating to these audiences has been scrutinised during the year and has been agreed that improvements are needed. As has been seen throughout this report, WSCP undertakes a lot of work and produces a lot of information through reports, briefings, action plans, adverts, emails, face to face in meetings and newsletters.

Safeguarding children is everyone's business.

During this pandemic children may be out of sight but they might not be out of harm's way.

**Got concerns?
Don't ignore it.
Report it.**

Call **03458 503 503**
For immediate risk always contact the Police.

WAKEFIELD
**safeguarding
children partnership**

7. Impact of WSCP during Covid -19

Partnership Approach during Covid -19

WSCP developed extensive guidance Safeguarding Children during Covid -19 Pandemic. The guidance sets out how agencies in Wakefield continue to support children and families during the pandemic which includes:

- Principles of working together during the pandemic
- Developing a partnership wide overview of vulnerable children through locality working
- Summary of current offer aligned to the level of need for children and families
- WSCP governance group arrangements
- Individual service arrangements

The arrangements WSCP coordinated ensured there was a clear understanding across the partnership as to how children and families are continuing to be supported throughout the pandemic. The arrangements have been best practice across the region for neighbouring districts to adopt.

Safeguarding Partnership Executive

WSCP Safeguarding Partnership Executive has provided a co-ordinating and leading role in the response to the pandemic to ensure children and families received support.

As part of this response the executive increased the frequency of meetings from bi-monthly to 3-weekly to enhance and strengthen governance. Areas of oversight have included:

- Service offer and updates from Children and Young People's Service, Wakefield CCG, West Yorkshire Police, Public and Education

- Safeguarding Children Vulnerability Tracker
- Communicating with the wider partnership
- Seek assurance locally via audit auditing on national reports from Children's Commissioner and data performance
- Developing multi-agency documents setting out adjustments to services

This approach taken by the executive ensured senior decision makers were able to respond to the safeguarding needs of children and families in a rapid manner by making suitable adjustments to multi-agency safeguarding arrangements. The impact of the statutory service's response to the pandemic was as follows:

Response from Children and Young People's Services

- Children's Social Care, Children First and Youth Services remained open and continued to support children and families. This included home, garden and door stop visits. Schools also provided outreach provision which included home visits to those who were not attending school and free school meal support
- Established local weekly safeguarding forums and vulnerability trackers to provide assurance to the Safeguarding Partnership Executive vulnerable children were being monitored. This required close partnership working on the frontline across services and included:
 - Locality Safeguarding Teams
 - Children First Hubs and Youth Services
 - Schools
 - School Improvement Team

- In order to support the above, the School Improvement Team overnight adjusted their roles to focus specifically on safeguarding which was key in actioning responses to matters arising from monitoring vulnerable children's school attendance
- Youth Work team undertook a programme of detached outreach work with neighbourhood policing to engage with young people and encourage understanding and cooperation with restrictions. Some Youth Workers were redeployed to Children Homes to ensure they remained open and to create staffing resilience
- Strengthened the online offer to children and families with daily online chat and group facilities with the launch of WF I Can and the updated Care4Us
- Our Family Our Future Programme with the Voluntary and Community Sector. Additional work took place with the VCS through local community hubs:
 - Supporting on how to make a safeguarding referral
 - Children First Hub link worker for each area of the district
 - Linked to Production Park to provide additional food to Food Banks
 - Partnered with libraries for activity packs to be included with food parcel deliveries
 - Established contact with NOVA to keep up to date with any additional need from Children's Services bid to support funding application

Response from Health Services

- NHS Wakefield CCG led Silver Tactical Children and Young People meetings which were chaired by the Chief Nurse and included representation from health and social care providers and commissioners across the Wakefield Footprint
- CAMHS Improvement plan continues to see support being available more timely for young people in Wakefield
- Mental Health Alliance commissioned Voluntary Community Sector organisations in our communities to deliver Emotional Well-Being services at a community level early on in Covid -19 wave one
- Team Around the School model piloted with 9 schools that included input from leads of Emotional Well-being services
- Mental Health Alliance investment in 2020/21 is supporting Primary Care Networks to develop innovative 'upstream' approaches to providing mental health support for 16-25 age group
- Monthly meetings established between providers of health visiting, maternity services, Family Nurse Partnership, safeguarding, public health leads and commissioning leads to share information and ensure care pathways meet the needs of high risk women and babies and pre-school children.
- Multi-Agency Pregnancy Liaison and Assessment Group (MAPLAG) which ensures a co-ordinated multi-agency response for high risk women and families has continued to meet virtually

- Perinatal Mental Health Services have remained in place with a mix of telephone, video and face to face appointments for the most at risk. Latest data for specialist services has shown increases in face to face appointments
- Provision of 6 - 8 week baby checks continuing in primary care, baby weighing also recommended to take place at these checks
- Actions from Wakefield Safeguarding Children's Partnership "Lockdown Babies" report include:
 - Prioritising contacts for families not previously known to services to be seen at face to face appointments in community health services as part of restoration plans;
 - Prioritise MDT meetings facilitated by GP practices with virtual safeguarding practice meetings with health visitors and midwives,
 - Guidance to mental health providers to ask whether service users have children and sharing information where appropriate

Response from West Yorkshire Police

- WYP have continued to deliver services as normal in respect of child safeguarding risks.
- WYP have sought to maximise the use of technology with partners to facilitate multi agency meetings such as the RAM meetings and maintain attendance at ICPC and Strategy meetings
- WYP have worked with LAC and Private providers to support the management of vulnerable children through lockdown / restriction periods
- Neighbourhood and YOT officers have worked in double-crewed vehicles to support young people and deal with related calls
- Committed to partnership working / early help provision around the locality hub model
- Providing quarterly outcome performance data relating to offences against children

Safeguarding Vulnerable Children Tracker

The WSCP Safeguarding Vulnerable Children Tracker was a key mechanism to monitor those children who were in receipt of Early Help, Child In Need, Child Protection who were eligible for a school place between March and July 2020. Data was regularly provided to monitor attendance of those children and services continually followed up with those children who were not attending school to maintain contact.

The 6 locality cluster meetings across the district aligned to Secondary School pyramids and catchment areas which enabled Children's Services to organise support around schools and the children they had on roll around this.

- Actions were identified through the tracker to ensure plans were put in place accordingly via the cluster meetings, this included:
 - Co-ordinated support for children and families over the summer holidays
 - Summer holiday food and activities provided via Our Families Our Future
 - Schools identified children who may require additional support and details were shared with Early Help Link Workers, the Youth Service and CAMHS

The tracker demonstrated multiple examples of positive impact to safeguard children, develop relationships between services, children accessing school:

- Schools were able to highlight issues of non-attendance of children with Children and Young People's Services who made contact with families and supported return to schools
- Arrangements were made with taxi contracts to provide transport to children where families felt uncomfortable using public transport. This supported children accessing school
- Via the locality cluster meetings schools were able to highlight safeguarding concerns for children not previously known to Children and Young People Services which allowed conversations to take place and appropriate action identified.



8. Future Areas for WSCP to consider

WSCP will maintain the commitment to deliver within the 5 priority areas:

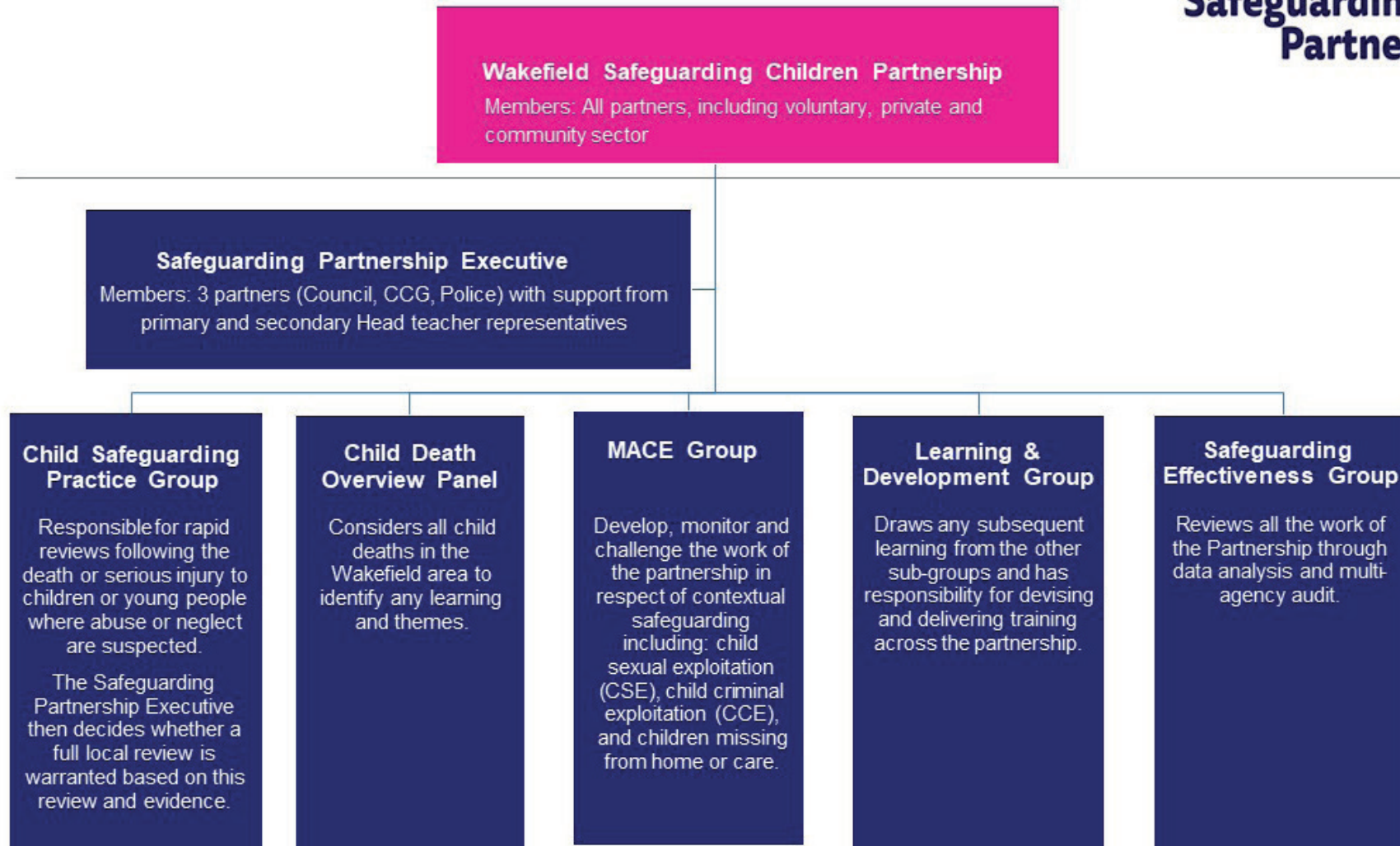


Looking ahead into 2020/21 WSCP has recognised the following areas would benefit from further development to ensure priority areas are progressed accordingly:

- Develop service user involvement from children and families
- Broaden approaches to communicate safeguarding children developments to service workforce:
 - Monthly safeguarding children e-bulletin
 - Increase WSCP generated activity to highlight safeguarding developments
 - Updated WSCP website to enable guidance, procedures and resources to be accessible more readily
- Further develop relationships with Wakefield Safeguarding Adults Board and Community Safety Partnership, with a focus on transitional arrangements between children and adult services
- Consider workforce development needs in light of Wakefield Families Together model and impact upon multi-agency practice
- Develop a WSCP Quality Assurance and Learning Improvement Framework
- Review and establish the Wakefield Child Death process, including CDOP and compliance Child Death Review Meeting

Appendix 1 - WSCP Structure

Wakefield Safeguarding Children Partnership



Appendix 2 - Relevant Agencies

Wakefield Council Adult Services
CAFCASS
The Mid Yorkshire Hospitals NHS Trust (MYHT)
Wakefield College
Bradford District Care NHS Foundation Trust (BDCFT)
NOVA (Voluntary and community Sector)
Wakefield Council Early Help Services
National Probation Service (NPS)
NHS England
Wakefield District Housing
Education (Primary and Secondary and Special Schools)
Community Rehabilitation Company (CRC)
Public Health - Wakefield Council
The South West Yorkshire Partnership NHS Foundation Trust (SWYPFT)
Yorkshire Ambulance Service
West Yorkshire Fire Service
Inspiring Recovery - Turning Point
Youth Offending Team (YOT)
Spectrum Community Health CIC
Child and Adolescent Mental Health Services (CAMHS) SWYPFT

Authors

Bev Paris

Wakefield Safeguarding Children Partnership Manager (2019 - 2020)

Jonathan Giordano

Wakefield Safeguarding Children Partnership Manager (2020 - Present)