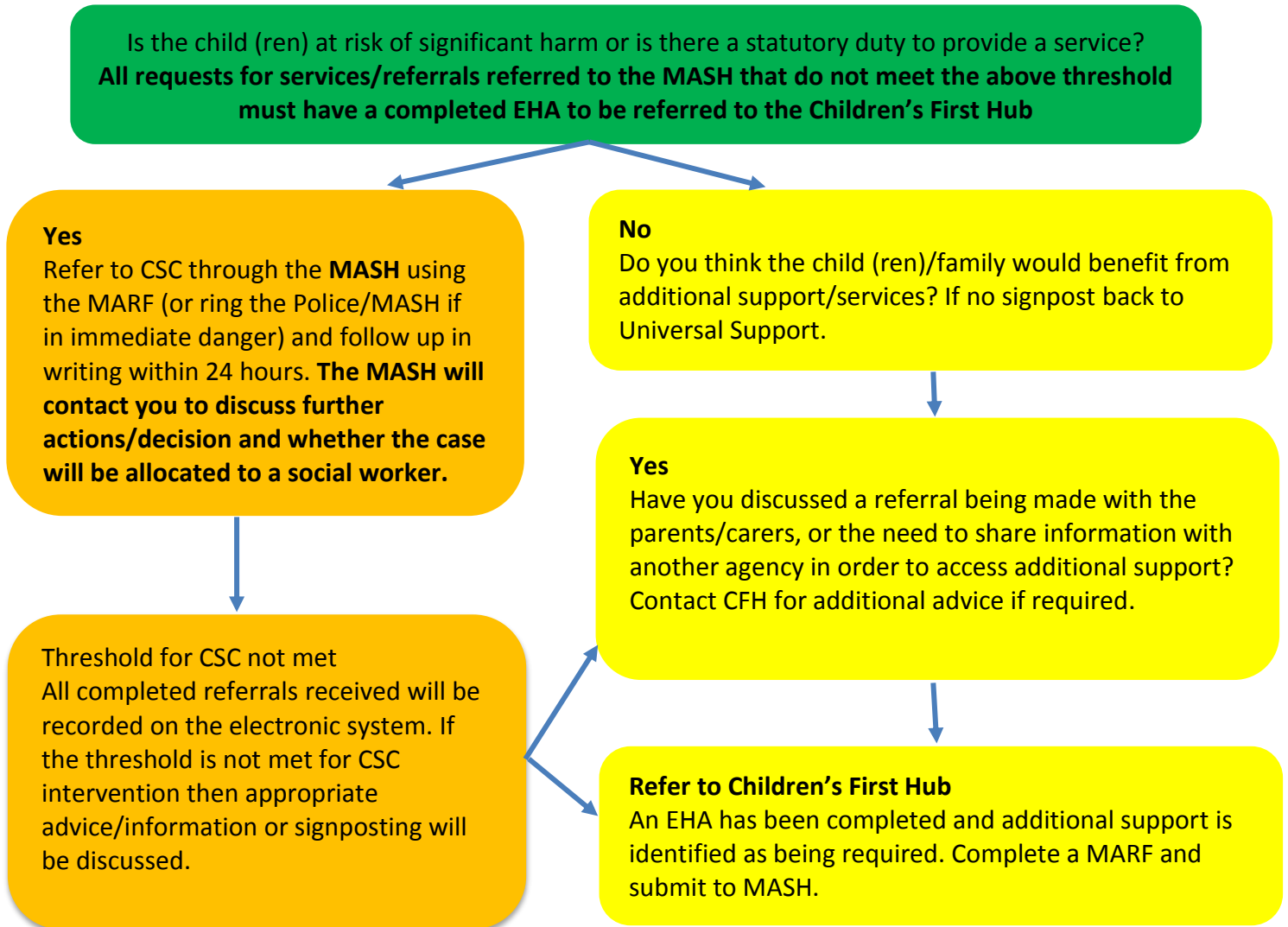


Request for Service/ Referral Pathway

Request for Service/Referrals can be made by any professional where there are concerns about a child or additional support services are required. For Early Help advice contact local Children First Hub. If uncertain contact the MASH on 0345 8 503 503 for further advice.



CFH Children First Hub
CSC Children's Social Care
EHA Early Help Assessment
MASH Multi-Agency Safeguarding Hub
MARF Multi Agency Referral Form

MASH 0345 8 503 503
Emergency Duty Team 0345 8 503 503

Children First Hubs:
Mid Wakefield **01924 307878**
North East **01977 724350**
South East **01977 722305**
Wakefield West **01924 303272**