

One Minute Guide

What is Wakefield’s Continuum of Need?

The Continuum of Need has been developed to help those who work or volunteer with children and families across the Wakefield District with making decisions about how to best provide support.

This approach is aligned to the district's Wakefield Families Together model, where a child and their family receive the right help, at the right time, from the right service, and importantly, from the right person, whilst always acting in the best interests of a child.

IMPORTANT NOTE

- Children and families can move across the areas of need on the continuum according to circumstances changes as their situation changes
- Not all children and families will move up and down the areas of need in a sequential manner. When deciding on what support is appropriate, the presence of a single or multiple combination of factors, the age of the child and protective factors all need to be considered

Which Agencies are involved?

Wakefield Families Together is a partnership of services that join up across Children and Young People's Services, Health and Education services and Voluntary Sector and Community organisations.

The approach of the Continuum of Need is aligned to the district's Wakefield Families Together model, where a child and their family receive the right help, at the right time, from the right service, and importantly, from the right person, whilst always acting in the best interests of a child.



Visit the [Wakefield Families Together website](#) for more information and to view the range of support available.

NO ADDITIONAL SUPPORT NEEDED

Most children reach their full potential through the care of their families and communities. Universal services are provided to all children and their families through community networks such as schools, primary healthcare, family and youth hubs, leisure services, voluntary and community groups.

EARLY SUPPORT

Early Support provides help when a need is identified at any point in a child’s life. It is not a service specific to one organisation, but rather a collaborative approach across all agencies and partners to work with children and families to prevent the need for statutory intervention.

Across the Wakefield District, every person working or volunteering with children and families, regardless of organisation, status or position, has a responsibility to support the delivery of early support and where needed, ensure a family has access to appropriate services.

REQUIRES MORE SUPPORT

Children whose needs are more complex, based on a range of needs and depth or significance of the needs. They are at risk of social or educational exclusion. Their health, welfare, social or educational development is being impaired and life chances will be impaired without the provision of additional services.

REQUIRES IMMEDIATE SAFEGUARDING SUPPORT

Some children may require an immediate referral to the Integrated Front Door (IFD) / Multi-Agency Safeguarding Hub (MASH) for an assessment to be completed to better understand their needs.

There are 6 Community Clusters

Wakefield Central and North West Cluster Family Hubs

Sunbeam **01924 302333** & Stanley **01924 303181**

Wakefield South West Cluster Family Hub

Castle **01924 303376**

Normanton and Featherstone Cluster Family Hubs

Butterflies **01924 307835** & Oakhill **01977 723923**

South East Cluster Family Hubs

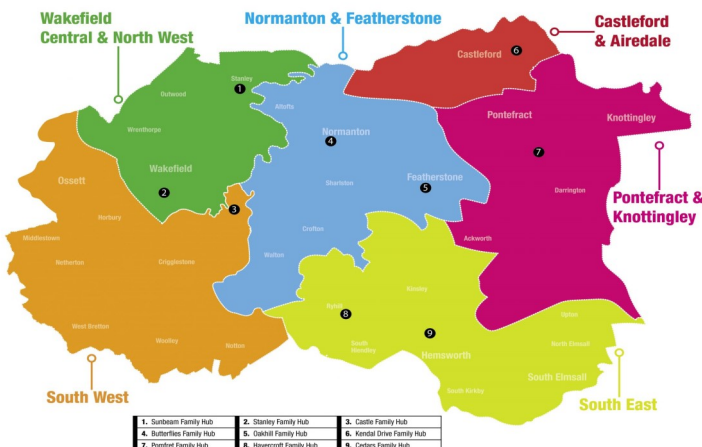
Cedars **01977 722215** & Havercroft **01924 306312**

Castleford and Airedale Cluster Family Hubs

Kendal Drive **01977 723543**

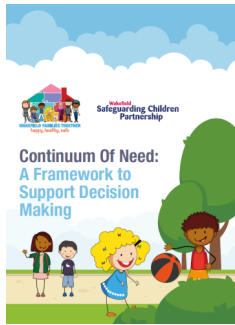
Pontefract and Knottingley Cluster Family Hubs

Pomfret **01977 722644**



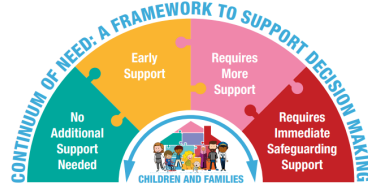
One Minute Guide

The following documents can help you in making decisions



For more information about Wakefield's early help strategy, assessing safety needs, and how to help children with special educational needs and disabilities (SEND) please download the full [Continuum of Need](#). The Continuum of Need also provide examples of possible

indicators that will assist workers to establish how best to support a families needs.



What is the 'Team Around' approach?

Children who are on roll at school and/or early years provision and who need a coordinated response to help access early support from a team of practitioners from different services dependent on their need. The Team Around meetings are made up of professionals from across the local authority and partner organisations including:

- Family and Youth Hub Team
 - Future In Mind, Primary Intervention Practitioners
 - Educational Improvement Teachers
 - 0-19 Health Service (including School Nursing)
- For further info on the Team Around School and Team Around the Early Years, please click [here](#).

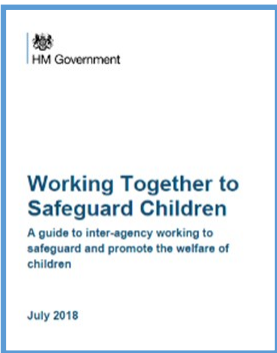
Who can I Contact?

Accessing Early and More Support

- If you are worried about a child and you have identified that they need early help and support, which does not meet the threshold for statutory intervention but is beyond a single agency response you may speak to your agency safeguarding lead or single point of contact as per your agency's arrangements or local Family Hub in the first instance. At times it is helpful in developing the next best steps for the child and family you are working with.

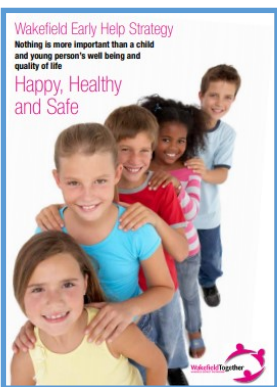
Accessing Immediate Safeguarding Support

- Where practitioners are working with a child and consider/suspect that a child is suffering or likely to suffer significant harm a phone call should be made to Wakefield's Integrated Front Door (IFD) on **0345 8503 503**.



Working Together to Safeguard Children 2023

A guide to inter-agency working to safeguard and promote the welfare of children



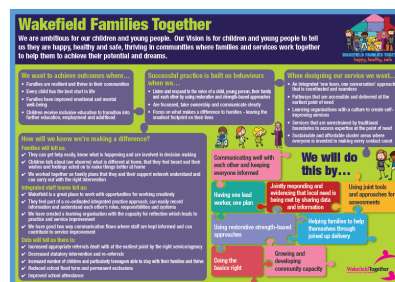
Wakefield Early Help Strategy

The strategy sets out the Children and Young People's Partnership Board's ambition for the development of prevention and early intervention approaches



Wakefield Families Together Website

Information and guidance around local family support in the Wakefield area



Wakefield Families Together 'plan on a page'

Wakefield's vision for children and young people.