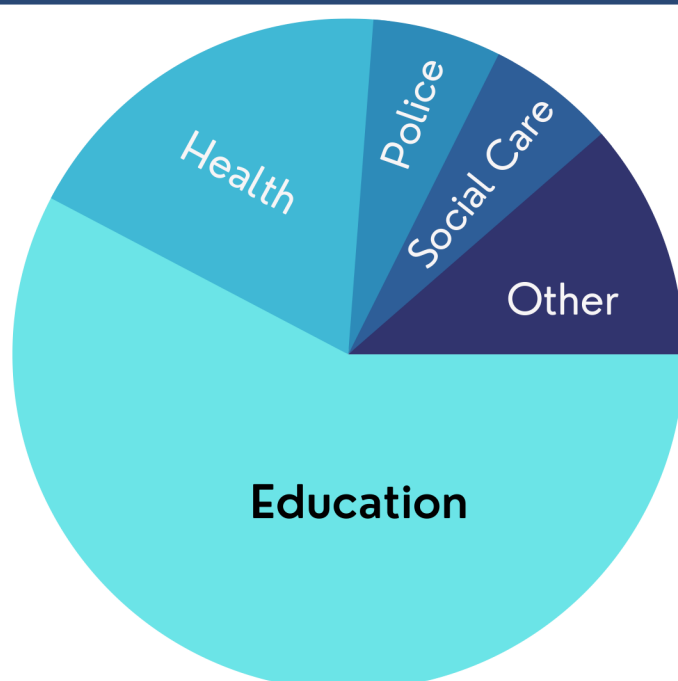




Wakefield Safeguarding Children Partnership

Perplexing Presentations & Fabricated or Induced Illness

Sector engagement during masterclass



Response rate



Based on evaluations from 142 of 215 attendees.

82%

rated the masterclass as either useful or extremely useful in relation to their role

94%

had access to the chat function

agency engagement

VCS
CAMHS
WDDAS
YJS
CAFCASS
BARNARDO'S
WMDC
POLICE
HEALTH
EDUCATION
LA

31%

said they had accessed the WSCP pre-recorded training previously

87%

reported no technical issues accessing the session



FEEDBACK

Key takeaways

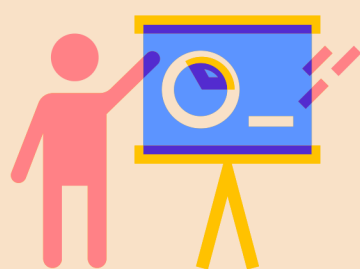
- The importance of information sharing and a thorough chronology
- learnt some new indicators to look out for that I hadn't thought about before
- Indicators of PP and FI
- Clarity of terminology in a mutli-agency forum
- I have never dealt with a case with PP or FI, so i feel that i have gained more of a knowledge and understanding around this, should in the future i work with a family where PP or FI is a concern
- Some of the things to look out for when considering PP or FI and also the importance of working with parents and other professionals
- Importance of Chronology & great to hear case studies
- To look for other signs and be mindful it isn't always physical
- Significance of communicating with other agencies as soon as possible.
- Clarified things I have researched over the past few years. Although I was aware of the need for a detailed chronology, it highlights this again. I've never come across a HERP before so that is good to know. I always find the case studies helpful.
- Professional curiosity and inclusion of PP in chronologies
- The procedures helped to clarify what I need to be doing but I also enjoyed the case study

- Absolutely everything, a brilliant session and I feel like I've learnt a great deal
- How FII presents and how medical professionals deal with this
- Definitions, signs and responses in our context. Effects on development of the young person. Developing a good chronology, at least internally, which can be linked to that of local authority who would coordinate a big picture.
- Better understanding of PP/FII key documents to be added to our safeguarding documents for reference
- Police case review
- Where to go next and start voicing our concerns.
- A greater knowledge of what FII is and the alerting signs
- Information on fabricated illness and how it presents for different members of the family.
- A large amount of extremely useful information shared.
- To communicate with other agencies and check the facts, not to let GDPR stop us from being professionally curious.
- Information regarding how this impacts on the lives of children
- Importance of liaising with other agencies and the confirmation that it is ok to share information and Trusts can facilitate this and link with other agencies -triangulate information. The red flag alerts -using different Trusts/moving schools often. Use the Neglect toolkit alongside looking into cases. The importance of ensuring Chronology is factual - including an analysis, recording child's voice and how to approach/get this with young children. The impact on children especially of a young age. The importance of accurate information and detail in all notes, so all can get the 'full picture' eg family history, no hear say. "If it's not written down, it's not happened"
- Information gathering; additional papers to review and importance of chronologies
- The importance of chronology and family history
- It is the willingness to challenge information, document clearly and share with other agencies.
- The huge importance of professional curiosity and multi agency working particulalry around information sharing
- Obtaining evidence and discussing with other professionals
- Lots to take away. Really informative.
- All of the information is relevant to my role and was really interesting.
- Keeping in mind parents view but balancing this with fact finding
- So much information! We have a possible case and I was clueless on how to move forward. I now understand the next steps and what I need to do with a chronology.
- Importance of good quality Chronology's, Importance of liaising and sharing information with all agencies, flow charts to support professional practice and decision making.
- Main contact with Pediatrician about any concerns and that this can be done.
- Early signs and interventions & open communication with other professional for concerns
- Consideration of the prevalence being greater than what is known
- Clearer Idea of what to do when have concerns about FII, getting involved and having dialogue with parents at an early stage. Very interesting to hear police perspective and things we can document/do at time of incidents which help them.
- Linking up with school nurse/health visitor/GP.
- Importance of a curious mind, reviewing whole history and sharing concerns with other agencies involved with the child/young person including safeguarding colleagues & social care, importance of good documentation.
- How vital that communication and information sharing with other professionals is for safeguarding children.
- I feel it is extremely useful when training of this nature is multiagency as this provides professionals different perspectives on issues that are all our business.
- It was interesting understanding how FII presents and mostly from biological mothers. The last stage of the police case was really interesting also, how given their chronology of event gave a clear indication that things weren't right.
- Sharing OMG with wider team and taking other learning to YJS developing practice forum.
- I will be relaying the information to my colleagues as refresher training.

Delivery

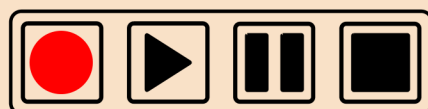
Face to Face

We use this to network, bring our communities together and learn from each other



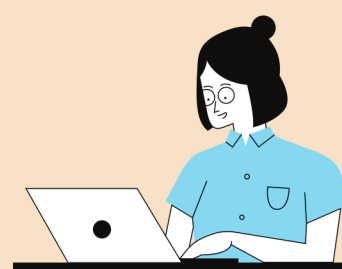
Recorded

For you to access 'on the go', bitesized information when and where you are able



Virtual

A flexible approach to learning, bringing together large groups of people with busy schedules



what you would like more information about

affects on older children with SEND

How to ensure we do get engagement from health professionals when we have concerns

A case study for a younger child or maybe a child who is SEND

Broader range of case studies as these were valuable to see approaches to PP/FII in practice

Who to turn to/what to do if Social Care will not intervene as a threshold is not met. How to approach the subject and concerns with parents

Differentiating psychological/ social factors in illness and how to tease that out of presentation e.g., somatising versus FI

more information in regards to the plans we can write to support children to reintegrate into school following period of absence and when we have concerns around PP

Who can support a parent/child

Areas involving neurology such as Autism and ADHD as these are becoming increasingly prevalent in schools

How to start the conversation and feel confident about suspected PP and FII

2023 PP / FII Masterclass Contributors



The Mid Yorkshire Hospitals
NHS Trust



Harrogate and District
NHS Foundation Trust



WEST YORKSHIRE
POLICE



South West Yorkshire Partnership
NHS Foundation Trust